

# 999 Oronoque Lane, Stratford Connecticut



## Professional Office Space Available

17,238 total sq. ft.

Contiguous from 910 sq. ft. to 6,550 sq. ft.

- Location strong for commuters
- 3/1000 parking
- Elevator
- Immediate Occupancy
- Building upgrades are in process
- Property manager is onsite

Lease rate:

\$18.00 psf, .50 psf cam, plus electric (\$2.25 psf)

To arrange a tour contact:

**Randy Vidal**

203-226-7101 Ext 3, [randy@vidalwettenstein.com](mailto:randy@vidalwettenstein.com)

**Bruce Wettenstein, SIOR**

203-226-7101 Ext 2, [bruce@vidalwettenstein.com](mailto:bruce@vidalwettenstein.com)

All information from sources deemed reliable and is submitted subject to errors, omissions, change of price, rental, and property sale and withdrawal notice.

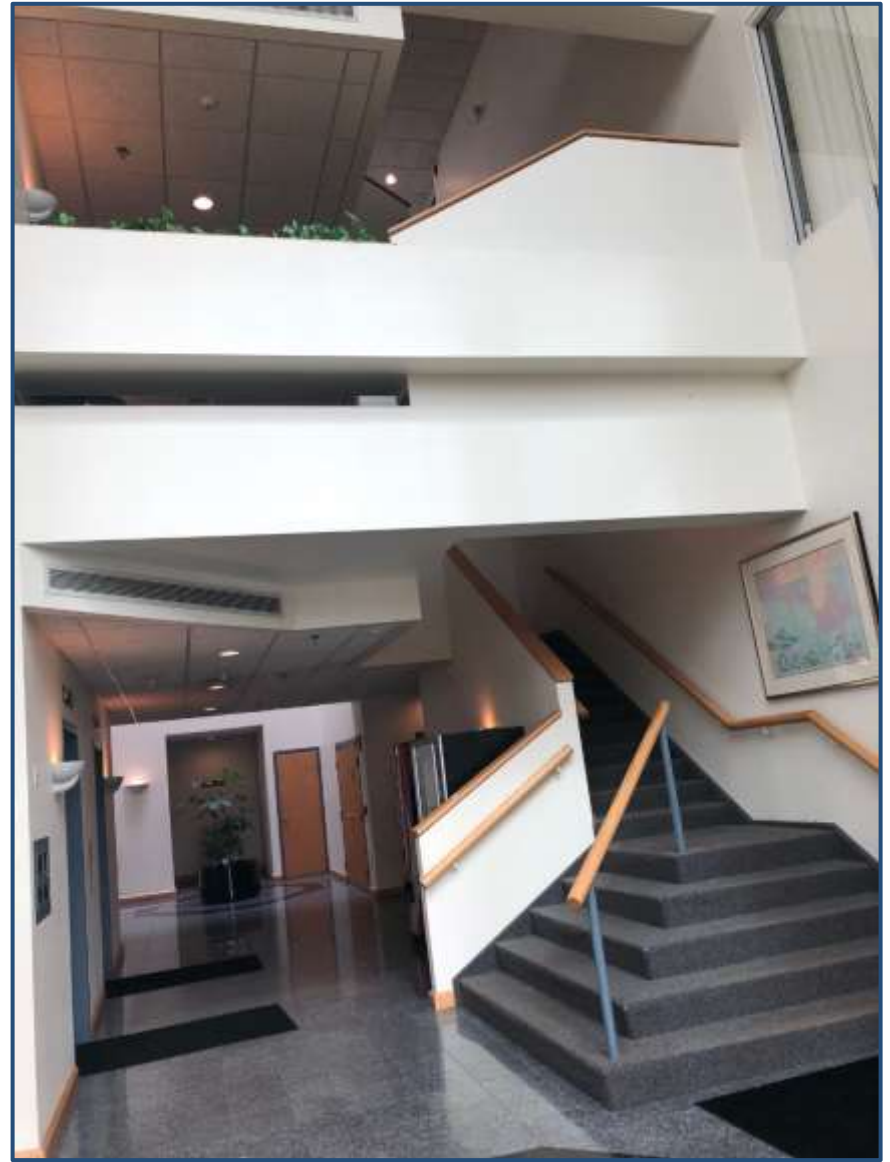
## VIDAL/WETTENSTEIN, LLC



Individual Members  
Society of Industrial and Office Realtors

719 Post Road East, Westport, CT 06880  
[www.vidalwettenstein.com](http://www.vidalwettenstein.com)

# Office Space Available for Lease



All information from sources deemed reliable and is submitted subject to errors, omissions, change of price, rental, and property sale and withdrawal notice.

## VIDAL/WETTENSTEIN, LLC



**SIOR**

Individual Members  
Society of Industrial and Office Realtors

719 Post Road East, Westport, CT 06880  
[www.vidalwettenstein.com](http://www.vidalwettenstein.com)



# Office Space Available for Lease



All information from sources deemed reliable and is submitted subject to errors, omissions, change of price, rental, and property sale and withdrawal notice.

## VIDAL/WETTENSTEIN, LLC



**SIOR**

Individual Members  
Society of Industrial and Office Realtors

719 Post Road East, Westport, CT 06880  
[www.vidalwettenstein.com](http://www.vidalwettenstein.com)



# Office Space Available for Lease



All information from sources deemed reliable and is submitted subject to errors, omissions, change of price, rental, and property sale and withdrawal notice.

## VIDAL/WETTENSTEIN, LLC



**SIOR**

Individual Members  
Society of Industrial and Office Realtors

719 Post Road East, Westport, CT 06880  
[www.vidalwettenstein.com](http://www.vidalwettenstein.com)



# 999 Oronoque Lane, Stratford Connecticut

---



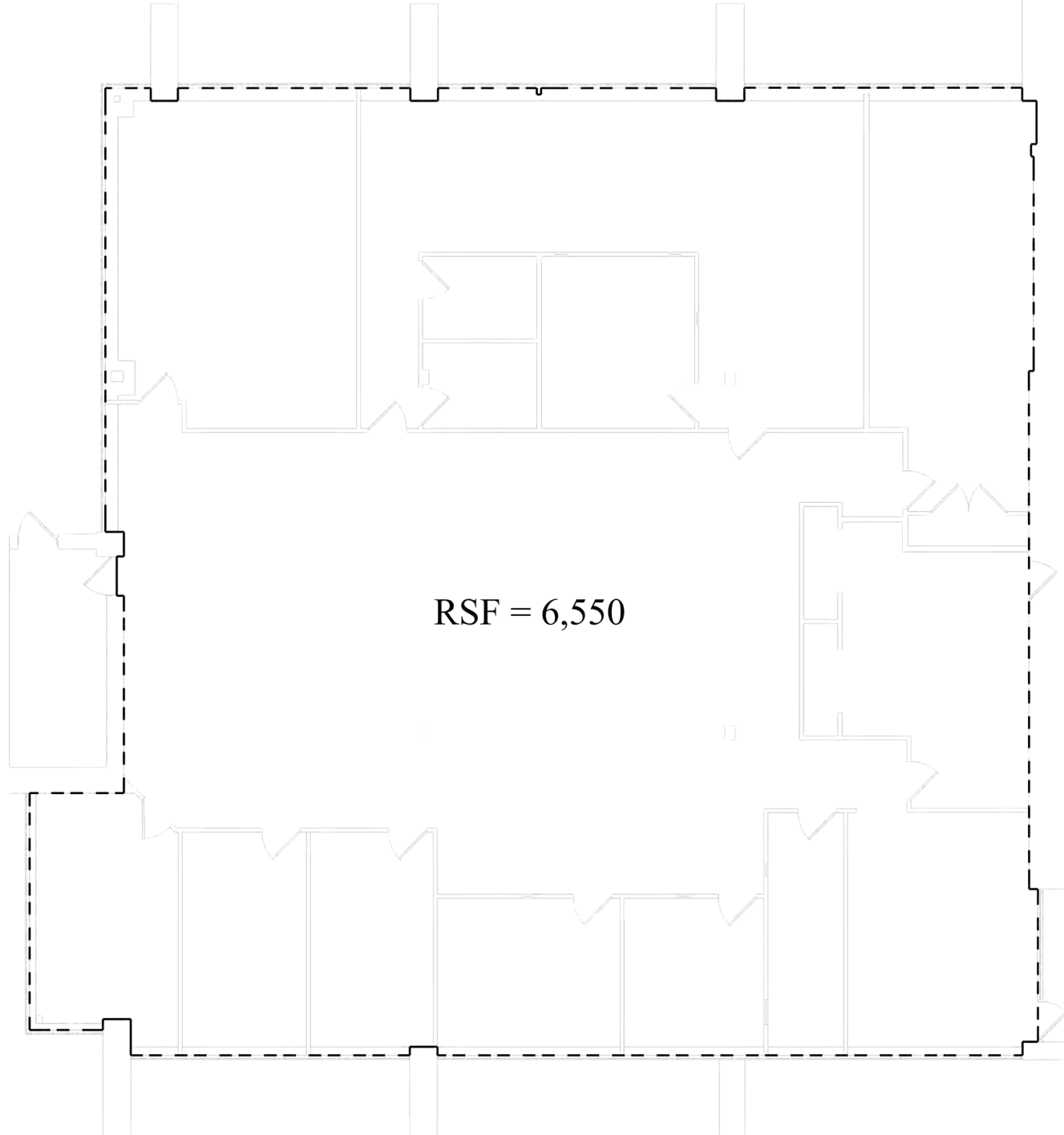
All information from sources deemed reliable and is submitted subject to errors, omissions, change of price, rental, and property sale and withdrawal notice.

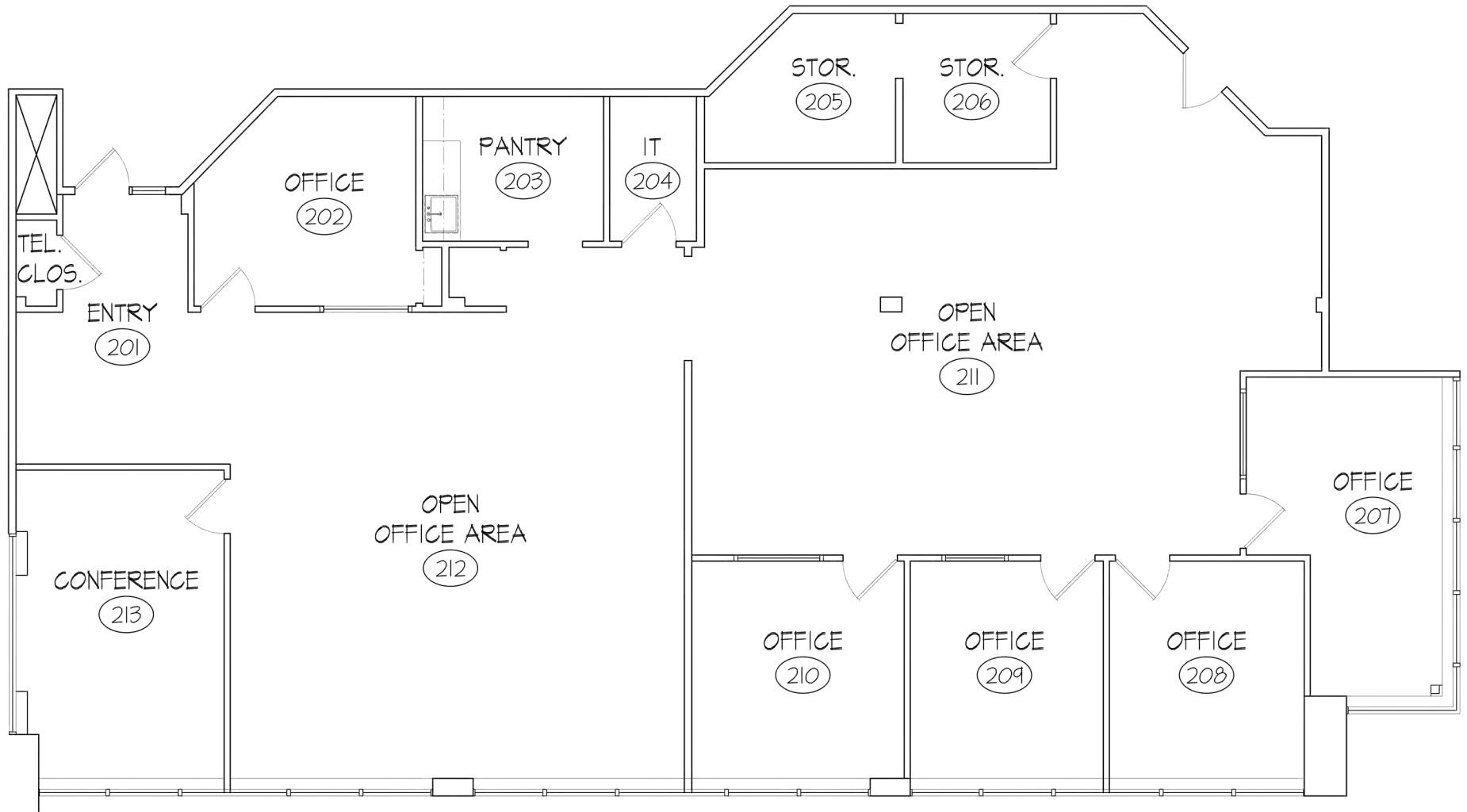
**VIDAL/WETTENSTEIN, LLC**



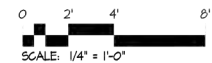
Individual Members  
Society of Industrial and Office Realtors

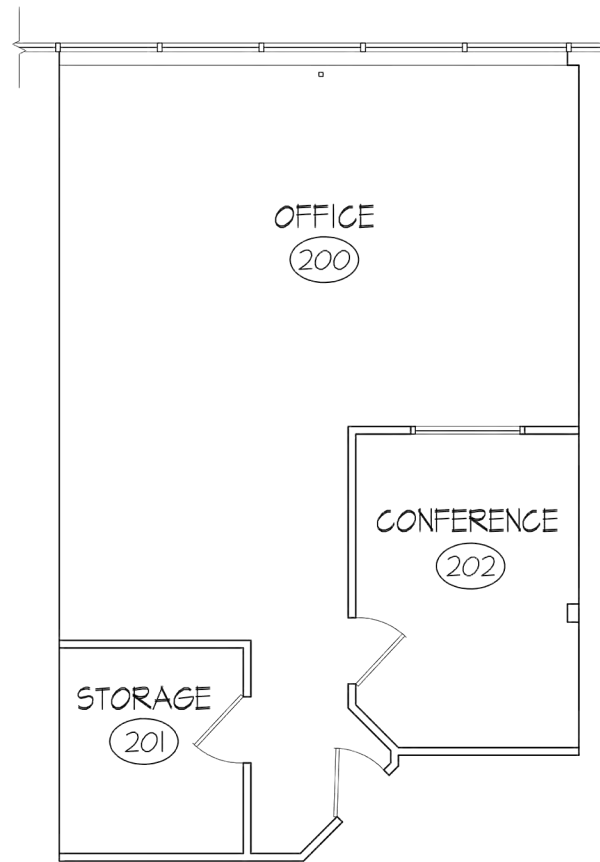
719 Post Road East, Westport, CT 06880  
[www.vidalwettenstein.com](http://www.vidalwettenstein.com)



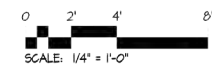


EXISTING SECOND FLOOR PLAN- 3,688 USF  
SCALE: 1/4" = 1'-0"

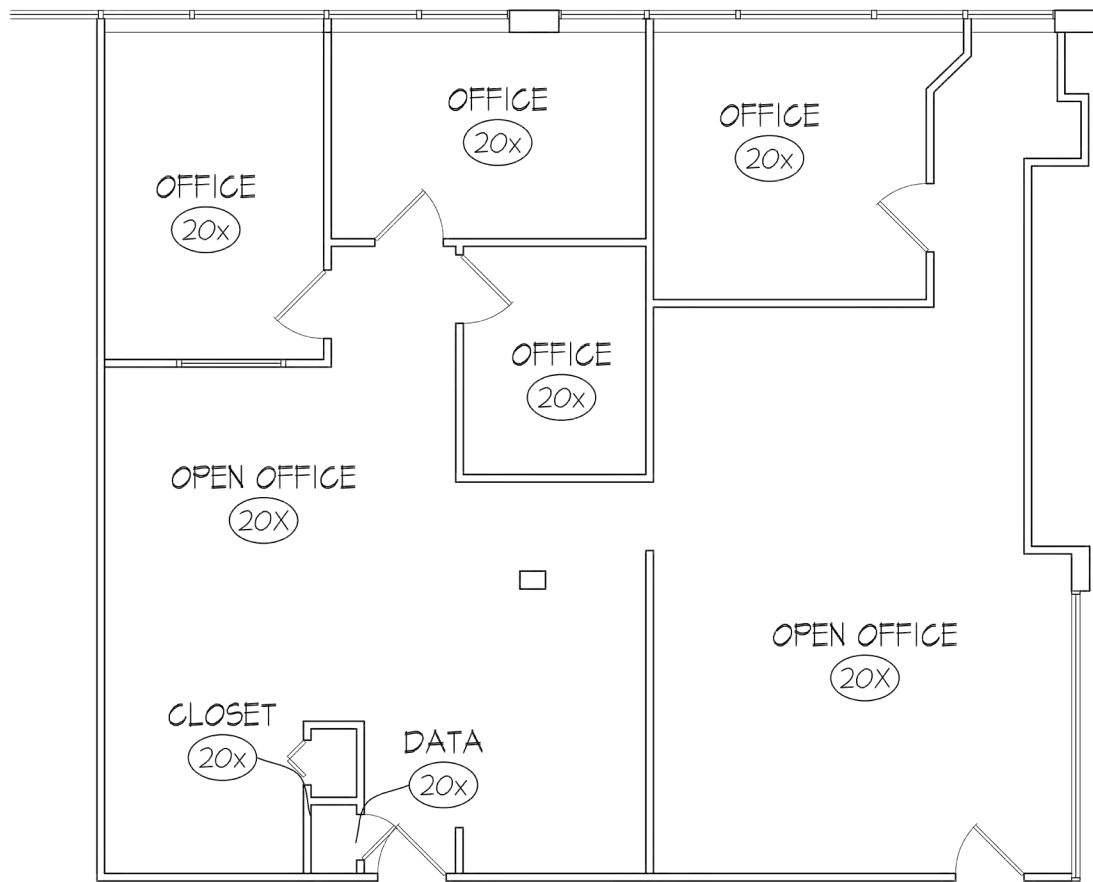




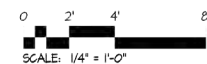
EXISTING FLOOR PLAN 910 RENTABLE SQ. FT.  
SCALE: 1/4" = 1'-0"

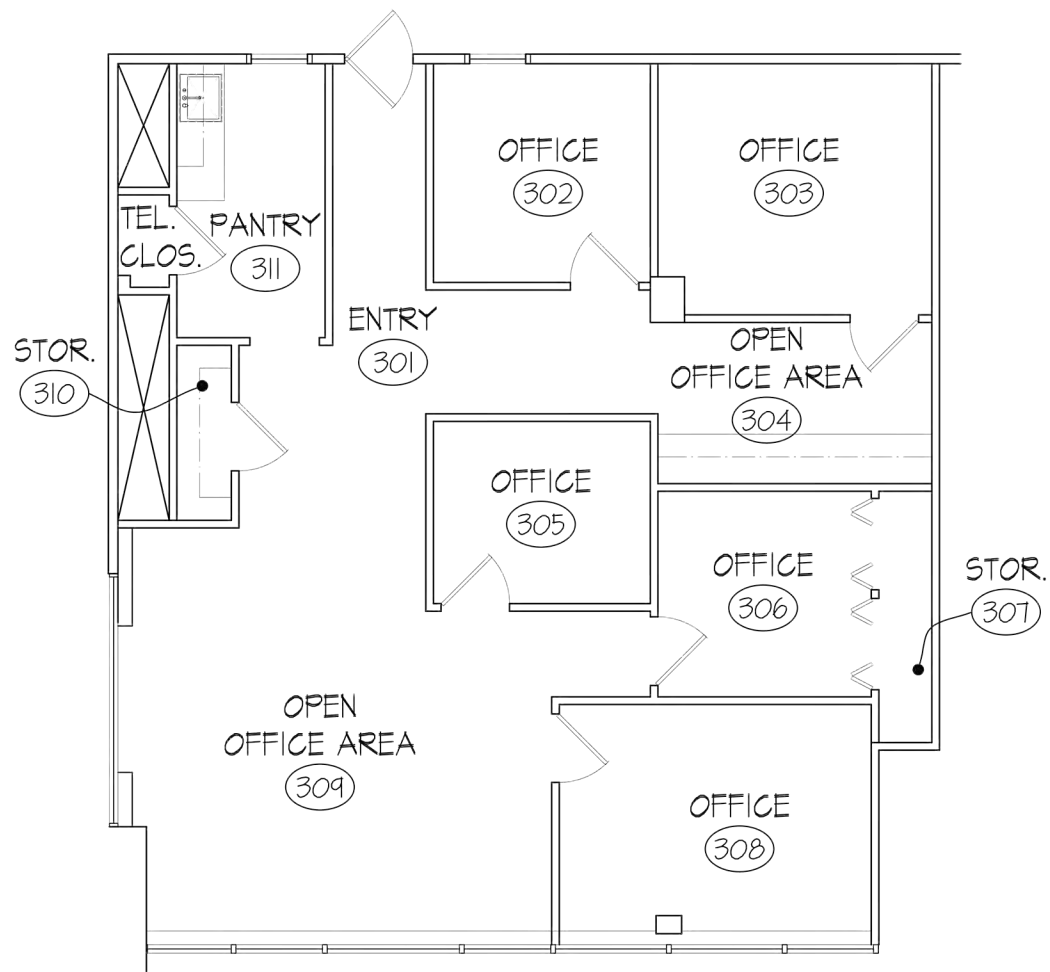




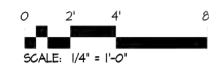


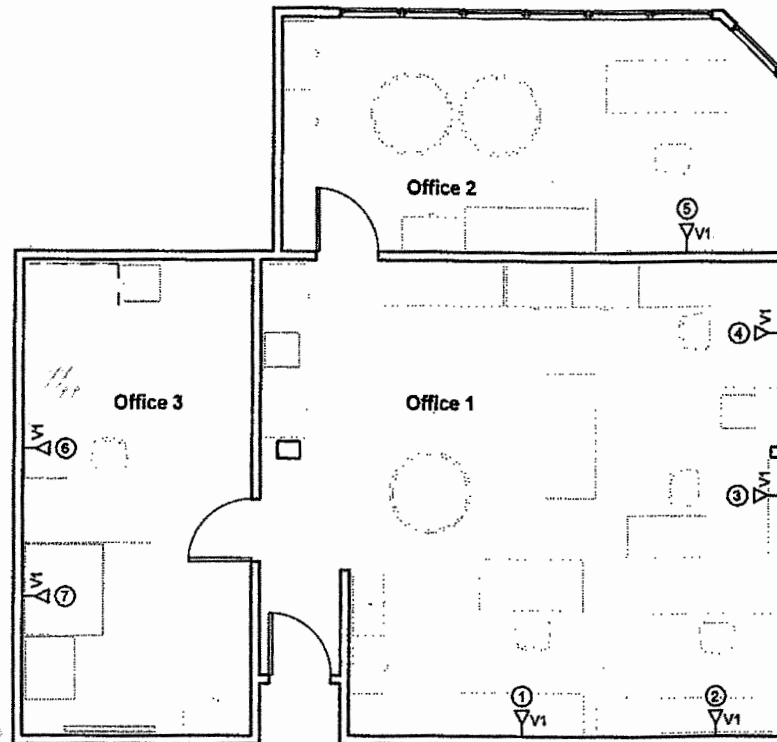
EXISTING FLOOR PLAN 1,936 RENTABLE SQ. FT.  
SCALE: 1/4" = 1'-0"





EXISTING THIRD FLOOR PLAN- 1,582 RSF  
SCALE: 1/4" = 1'-0"





**Belcan**

Belcan Corporation  
10200 Anderson Way  
Cincinnati, Ohio 45242

Belcan - AETD  
999 Oronoque Lane  
Stratford, CT 06614

No.	Description	Date

### Voice Layout

Project number	A105
Date	
Drawn by msp	
Checked by	
Scale 3/16" = 1'-0"	

5/30/2007 2:47:33 PM

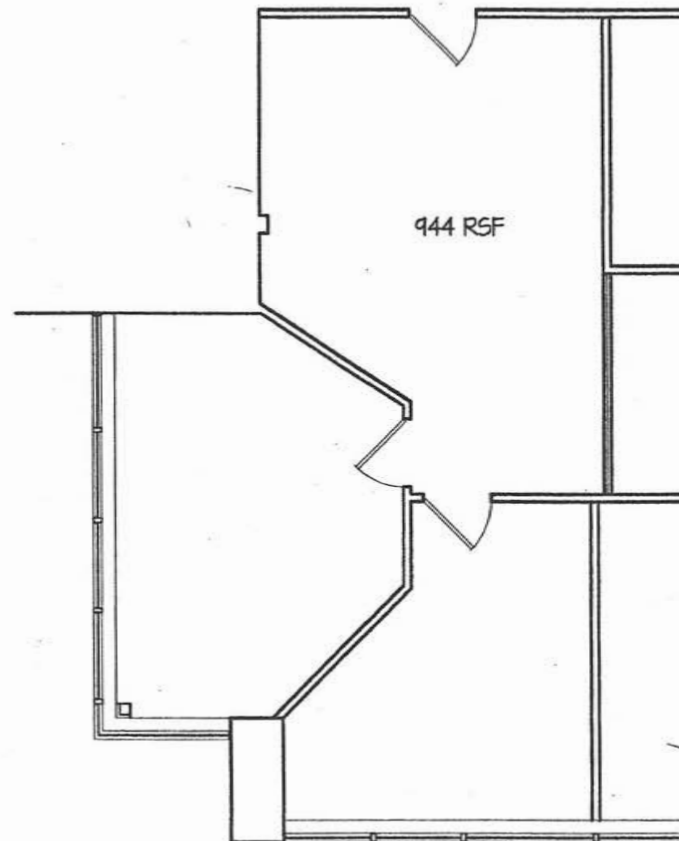
3N

1,628 SF

6/21/10



SUITE 201



SCALE: 1/8" = 1'-0"

RYDERS LANDING

999 ORONOQUE LANE

STRATFORD, CONNECTICUT

SECOND FLOOR

23 JULY 2019 #N19033



ANTINOZZI ASSOCIATES  
ARCHITECTURE & INTERIORS