

8 Progress Drive, Shelton, Connecticut



8 Progress Drive is located in the prime office market of Shelton Connecticut with easy and quick access to/from Route 8, numerous restaurants and shopping, medical offices and hotels. Situated on the city bus line.

Two Office Suites for Lease

6,355 Sq Ft & 10,693 Sq Ft Available, Sub-dividable

- Two-story atrium lobby
- Second floor space
- Elevatored building
- Parking ratio of 4.5 per 1,000 RSF
- 7 day / 24 hour access
- Monument signage opportunities

10, 693 Sq Ft unit to be designed to tenants liking.

Lease Price: \$15.00 - \$16.50 gross plus electric

Contact Bruce Wettenstein, SIOR
203.226.7101 ext. 2
Email: bruce@vidalwettenstein.com

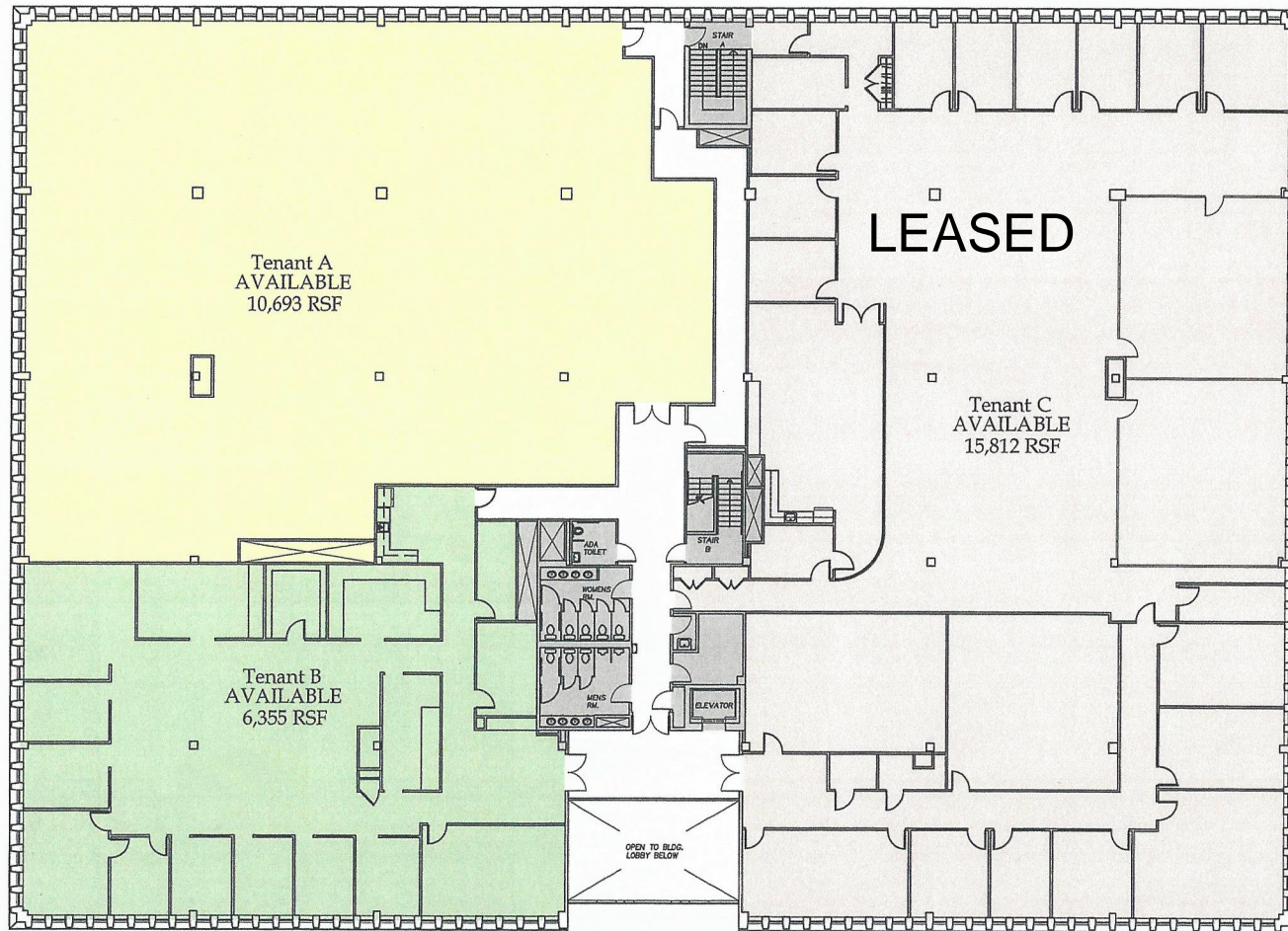
All information from sources deemed reliable and is submitted subject to errors, omissions, change of price, rental, and property sale and withdrawal notice.



Individual Members
Society of Industrial and Office Realtors

VIDAL/WETTENSTEIN, LLC

719 Post Road East, Westport, CT 06880
www.vidalwettenstein.com



ELM STREET PARTNERS

THREE TENANT SCENARIO
8 PROGRESS DRIVE
 2ND floor Tenant Block Plan
 Shelton, CT.

