

# 88 Ryders Lane, Stratford, Connecticut



Space from 548 to 7,070 sq. ft. units on 2<sup>nd</sup> floor

- Location strong for commuters
- Supporting amenities on site
- Elevator
- Spaces have separate gas and electric meters
- Immediate Occupancy



Lease Rate Reduced!!  
\$17.50 PSF + utilities + .50 PSF cam charges

To arrange a tour contact:  
**Bruce Wettstein, SIOR**  
203-226-7101 ext. 2, [bruce@vidalwettenstein.com](mailto:bruce@vidalwettenstein.com)  
**Randy Vidal**  
203-226-7101 ext. 3, [randy@vidalwettenstein.com](mailto:randy@vidalwettenstein.com)

All information from sources deemed reliable and is submitted subject to errors, omissions, change of price, rental, and property sale and withdrawal notice.



**SIOR**

Individual Members

Society of Industrial and Office Realtors

**VIDAL/WETTENSTEIN, LLC**

719 Post Road East, Westport, CT 06880

[www.vidalwettenstein.com](http://www.vidalwettenstein.com)

# Ryders Landing, Stratford, CT

Many new updates to Ryders Landing property and buildings as well as modifications to transportation routes and traffic flow coming very soon!

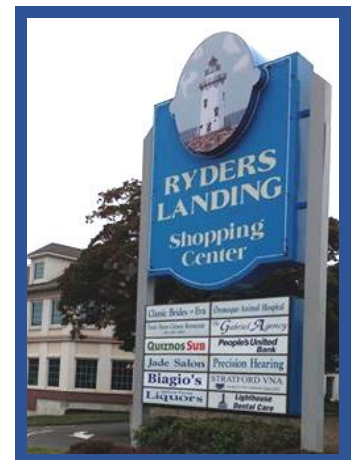
## Office Spaces for Lease

Bldg. 2: from 548 to 7,070 sq. ft. units available  
\$17.50 PSF + Utilities + .50 PSF CAM charges

- Parking for 400+ vehicles
- Parking lot resurfaced & stripped
- 8 Minutes to I-95 & 5 minutes to Route 8
- 4 way exchange to Merritt Parkway within view
- Access and egress lanes for Sikorsky planned for spring 2019, eliminating two lights
- Expanding walk ways
- Bus line at Ryder's Landing
- Owners will do a test fit for prospective tenant
- Owners have in house construction team

## 88 Ryders Lane, Building 2

- Building 2 exterior is being renovated next year, 2019
- Owners will do tenant improvements, in building 2
- 8% core factor



All information from sources deemed reliable and is submitted subject to errors omissions, change of price, rental, and property sale and withdrawal notice.



Individual Members  
Society of Industrial and Office Realtors

## VIDAL/WETTENSTEIN, LLC

719 Post Road East, Westport, CT 06880  
www.vidalwettenstein.com

# Ryders Landing, Stratford, CT

## Office Space Available for Lease



Bldg. 2: from 548 to 7,070 sq. ft. units available

All information from sources deemed reliable and is submitted subject to errors omissions, change of price, rental, and property sale and withdrawal notice.



Individual Members  
Society of Industrial and Office Realtors

## VIDAL/WETTENSTEIN, LLC

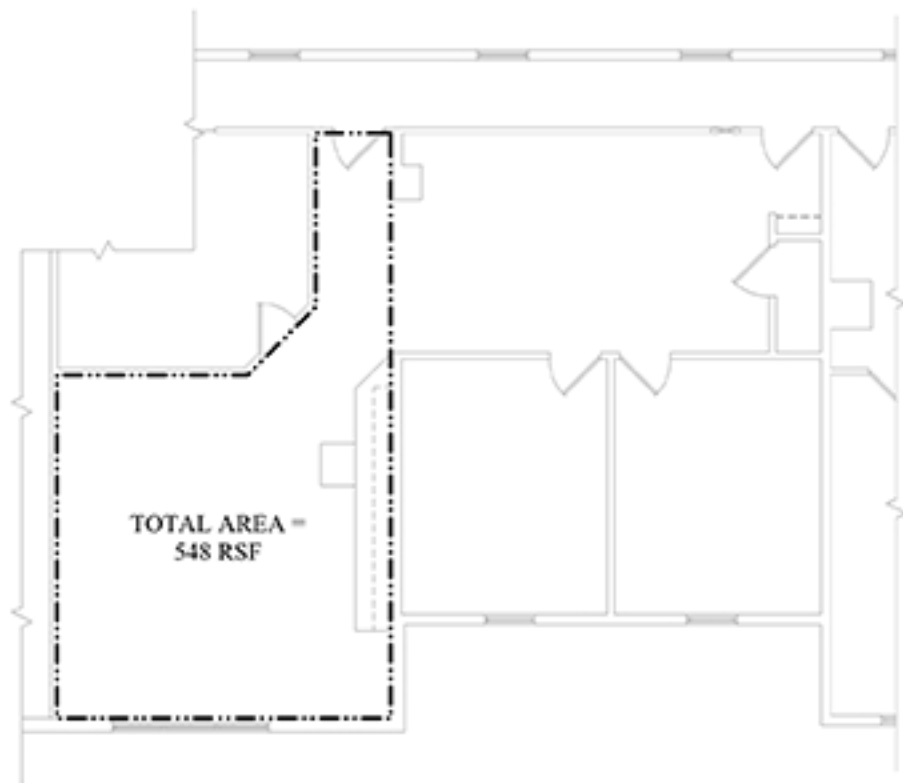
719 Post Road East, Westport, CT 06880  
[www.vidalwettenstein.com](http://www.vidalwettenstein.com)



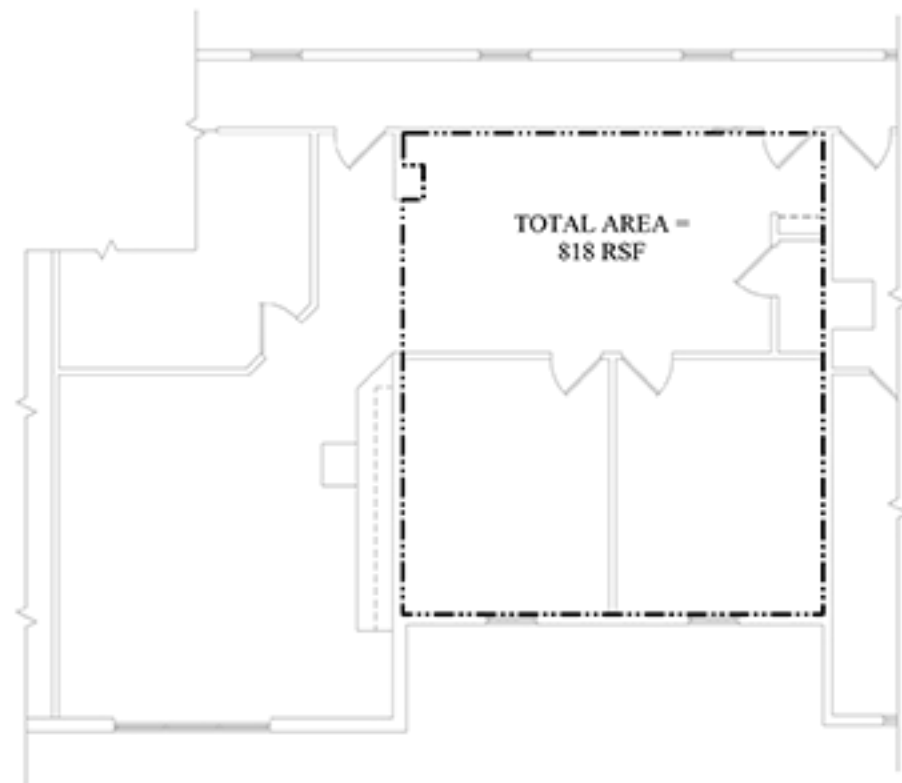
PARTIAL SECOND FLOORPLAN  
STRATFORD, CONNECTICUT



ANTINUZZI ASSOCIATES  
ARCHITECTURE & INTERIORS



TOTAL AREA =  
548 RSF



TOTAL AREA =  
818 RSF

EXISTING SECOND FLOOR PLAN (PARTIAL)

SCALE: 1/8" = 1'-0"

EXISTING SECOND FLOOR PLAN (PARTIAL)

SCALE: 1/8" = 1'-0"

