

# 7120 Main Street, Trumbull, Connecticut



## INDUSTRIAL BUILDING SALE OR LEASE

**114,000 Square Feet**  
**10 acres of land, expansion possible**

Building: 1 Story, 300' x 380'

Parking: 300±

Utilities: natural gas, city water and city sewer

Heat: natural gas, overhead forced air

Sale: ~~\$8,000,000~~ **REDUCED: \$7,500,000**

Lease: Negotiable

Location: One minute to Route 25

Contact Bruce Wettstein, SIOR

203.226.7101 ext. 2

Email: [bruce@vidalwettenstein.com](mailto:bruce@vidalwettenstein.com)

All information from sources deemed reliable and is submitted subject to errors, omissions, change of price, rental, and property sale and withdrawal notice.



**SIOR**

Individual Members

Society of Industrial and Office Realtors

**VIDAL/WETTENSTEIN, LLC**

719 Post Road East, Westport, CT 06880

[www.vidalwettenstein.com](http://www.vidalwettenstein.com)

# 7120 Main Street, Trumbull, Connecticut



All information from sources deemed reliable and is submitted subject to errors, omissions, change of price, rental, and property sale and withdrawal notice.



**SIOR**

Individual Members

Society of Industrial and Office Realtors

**VIDAL/WETTENSTEIN, LLC**

719 Post Road East, Westport, CT 06880

[www.vidalwettenstein.com](http://www.vidalwettenstein.com)



## ***INDUSTRIAL PRODUCTION / WAREHOUSE / OFFICE FACILITY***

### ***FOR LEASE***

- PROPERTY ADDRESS:** 7120 Main Street, Trumbull, Connecticut
- SIZE:** 114,000 square feet of high bay warehouse space.
- DESCRIPTION:** Single story block and steel building built in late 70's.
- EXPANSION:** Yes. The zone allows some expansion of possibly 25,000 sq/ft.
- PARKING:** Approximately 385 spaces, including visitor & handicap parking. Parking area is well lit.
- CLEAR HEIGHT:** 21' clear.
- SAFETY DETAILS:** Simplex Fire Alarm Control Panel, smoke, heat and fire sensors, throughout the facility. Simplex 4009 IDNET NAC Extender. Multiple Fire Hydrants in the parking area.
- SPRINKLERED:** Multiple zones throughout the facility. Maintained by Allstate Fire Sprinkler, Inc.
- WATER:** City water, Aquarion Water Company
- SEWER:** City Sewer
- GAS:** Natural Gas, Southern Connecticut Gas Company
- HEAT:** Natural Gas, both ceiling radiant heating system and circulating hot water forced air hung units. Boiler is a H B Smith gas fired system, cast iron, for both warehouse and office area.
- AIR CONDITIONING:** The air conditioning ducts are in place in the event the tenant requires offices, or they can be removed.
- COLUMN SPACE:** 30' x 30' column spacing
- SPECIAL EQUIPMENT:**
- Dual UPS (Uninterrupted Power Source) Cummins Generators, 277/480 Volt, capable of 3,750 amp output.
  - Dual Trash compactors on pads
  - In ground sprinkler watering system
  - Exterior Parking lights

FLOOR LOAD: Poured concrete

WIRING: Cat 5 wiring

ELECTRICAL: Amps: 3,000 Volts: 480/277 3 Phase: 4 Wire

LIGHTING: High Intensity Discharge (HID) & Fluorescent lighting in the warehouse.

TRUCK FACILITIES: 3 interior covered loading docks with load levelers on the south side of the building along with a drive up ramp, and 4 interior covered loading docks on the north side. Overhead doors are 22' x 14' on the south side and 22' x 14' on the north side. The building also has 11 knock out panels for 8' x 8' loading docks in place.

MAJOR HIGHWAY: The property is only half a mile from the Route 25 connector which leads directly to I-95 and approximately 10 miles from Route 84.

TAXES: The annual taxes are \$1.38 per sq/ft.

OCCUPANCY: 30 days

PRICE: Lease price: negotiable  
Sale price: ~~\$8,000,000~~ Price Reduced \$7,500,000

# 7120 Main Street, Trumbull, Connecticut



All information from sources deemed reliable and is submitted subject to errors, omissions, change of price, rental, and property sale and withdrawal notice.



**SIOR**

Individual Members

Society of Industrial and Office Realtors

**VIDAL/WETTENSTEIN, LLC**

719 Post Road East, Westport, CT 06880

[www.vidalwettenstein.com](http://www.vidalwettenstein.com)

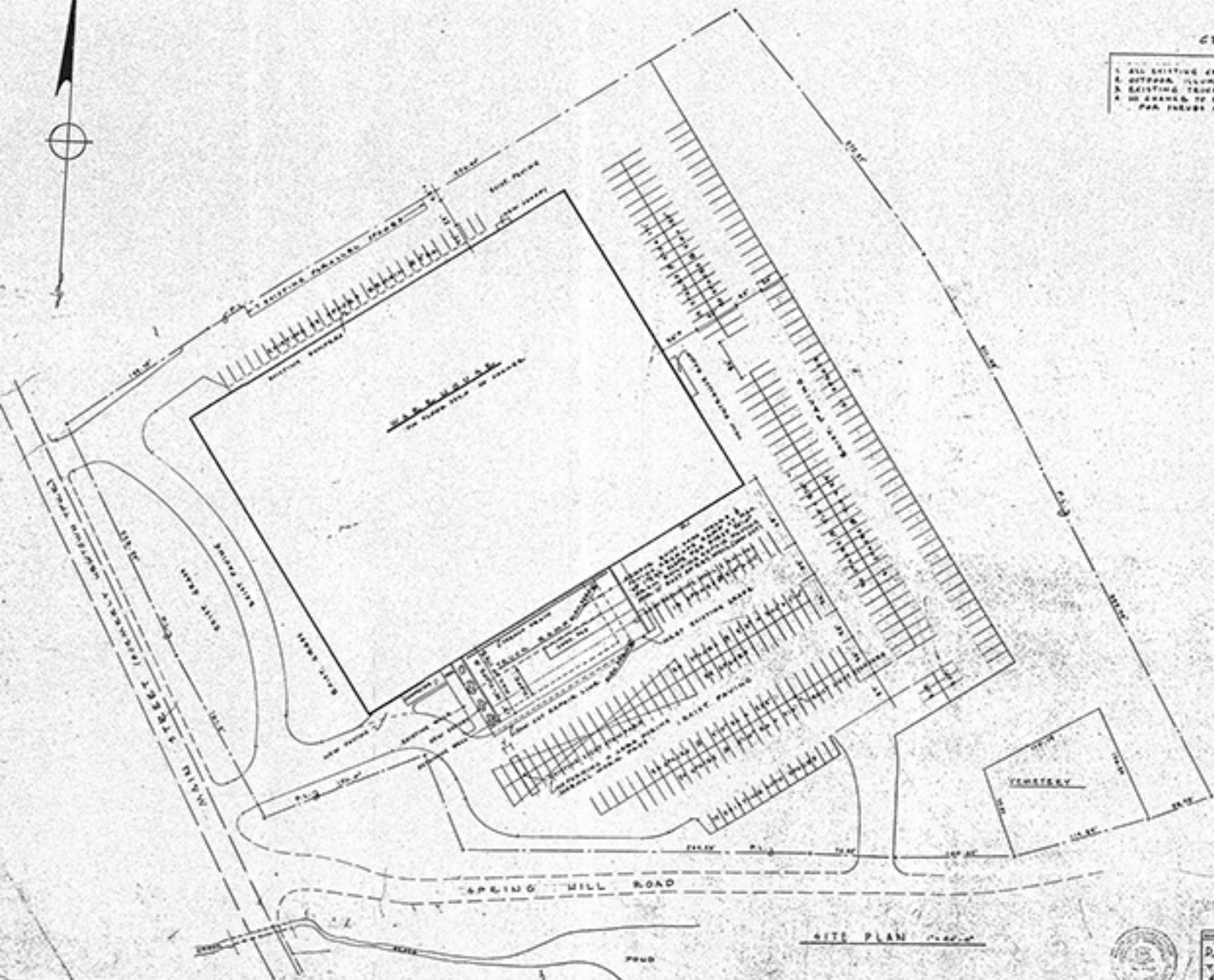


North



GENERAL NOTES

- 1. ALL EXISTING CRACKS REMAIN AS IS EXCEPT AT TUCKER HALL
- 2. OUTDOOR ILLUMINATION REMAINS AS IS
- 3. EXISTING TRUCK UNLOADING AREAS TO BE USED AS WAREHOUSE STORAGE
- 4. NO CHANGE TO EXISTING HAZARDOUS WASTE AND HAZARDOUS SUBSTANCE PER TREVES AT SOUTH WEST AREA OF TUCKER HALL & CONFLICTS



SITE PLAN

allied stores corporation

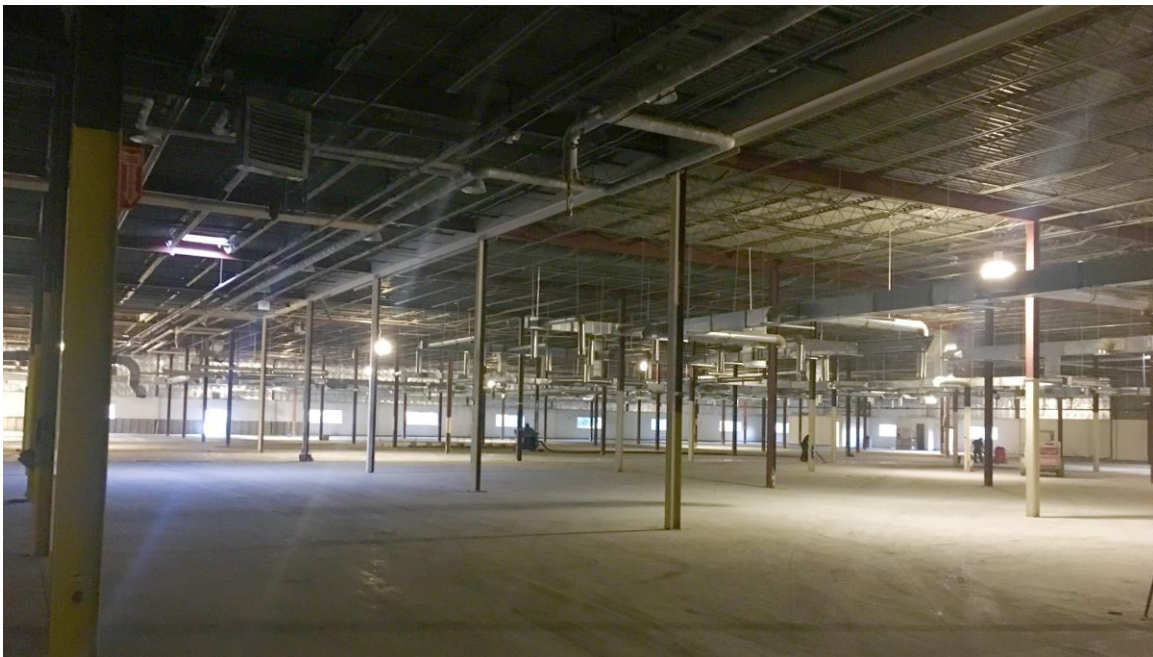
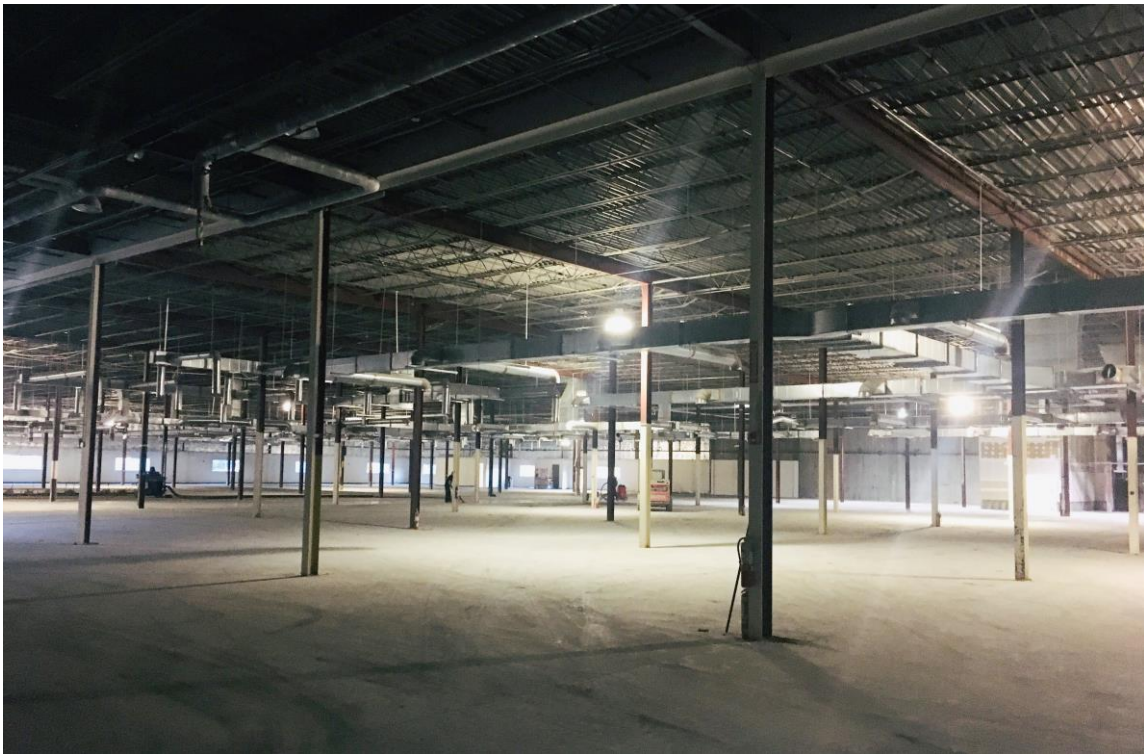
D.M. READ INC. — WAREHOUSE  
 TREVES & CO. — CONSTRUCTION  
 SITE PLAN





# INDUSTRIAL PRODUCTION / WAREHOUSE / OFFICE FACILITY

7120 Main Street, Trumbull, Connecticut



All information from sources deemed reliable and is submitted subject to errors omissions, change of price, rental, and property sale and withdrawal notice.



Individual Members  
Society of Industrial and Office Realtors

## VIDAL/WETTENSTEIN, LLC

719 Post Road East, Westport, CT 06880  
[www.vidalwettenstein.com](http://www.vidalwettenstein.com)

# INDUSTRIAL PRODUCTION / WAREHOUSE / OFFICE FACILITY

7120 Main Street, Trumbull, Connecticut



All information from sources deemed reliable and is submitted subject to errors omissions, change of price, rental, and property sale and withdrawal notice.



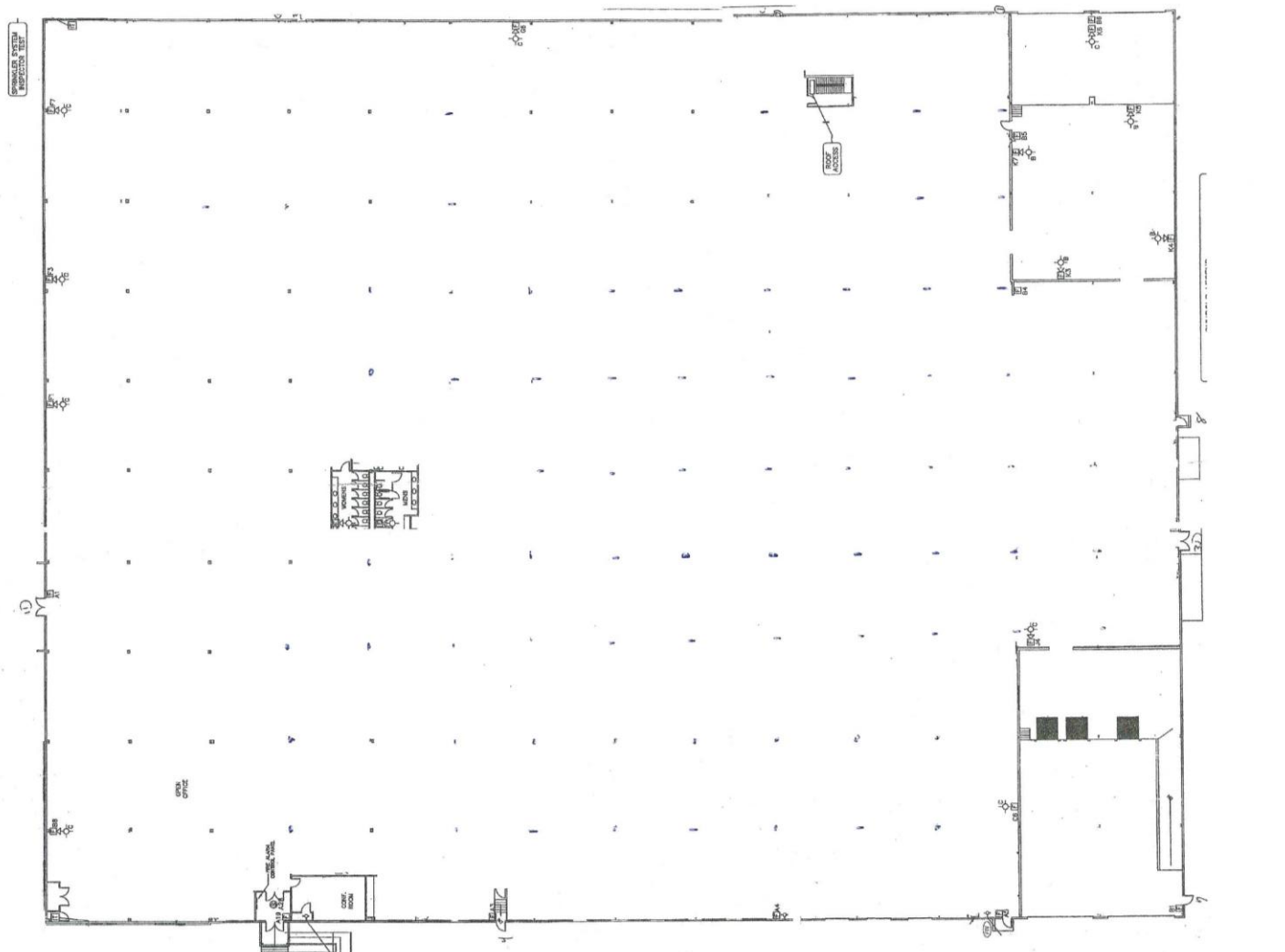
Individual Members  
Society of Industrial and Office Realtors

## VIDAL/WETTENSTEIN, LLC

719 Post Road East, Westport, CT 06880  
[www.vidalwettenstein.com](http://www.vidalwettenstein.com)



# 7120 Main Street, Trumbull, Connecticut



All information from sources deemed reliable and is submitted subject to errors, omissions, change of price, rental, and property sale and withdrawal notice.



**SIOR**

Individual Members

Society of Industrial and Office Realtors

**VIDAL/WETTENSTEIN, LLC**

719 Post Road East, Westport, CT 06880

[www.vidalwettenstein.com](http://www.vidalwettenstein.com)

**7120 Main St**

Trumbull, CT 06611 - Trumbull Submarket

114,000 SF For Sale at \$8,000,000 (\$70.18/SF) with 114,000 SF Available for Lease with Industrial Rent of \$8.00/nnn

114,000 SF Class B Flex Light Distribution Building Renovated in 2004 Built in 1980

Summary **Demographics** Daytime Employment Consumer Spending Traffic

Radius	1 Mile	3 Mile	5 Mile
<b>Population:</b>			
2022 Projection	3,044	26,389	73,835
2017 Estimate	2,986	25,883	72,411
2010 Census	2,880	24,982	69,840
Growth 2017-2022	1.94%	1.95%	1.97%
Growth 2010-2017	3.68%	3.61%	3.68%
2017 Population Hispanic Origin	175	1,471	4,579
<b>2017 Population by Race:</b>			
White	2,752	23,859	66,397
Black	65	575	2,130
Am. Indian & Alaskan	3	28	80
Asian	132	1,094	2,910
Hawaiian & Pacific Island	0	3	16
Other	34	326	878
<b>U.S. Armed Forces:</b>	<b>0</b>	<b>5</b>	<b>15</b>
<b>Households:</b>			
2022 Projection	1,112	9,109	25,543
2017 Estimate	1,091	8,931	25,045
2010 Census	1,052	8,622	24,178
Growth 2017 - 2022	1.92%	1.99%	1.99%
Growth 2010 - 2017	3.71%	3.58%	3.59%
Owner Occupied	908	8,191	22,854
Renter Occupied	183	740	2,190
<b>2017 Avg Household Income</b>	<b>\$151,484</b>	<b>\$147,009</b>	<b>\$140,111</b>
<b>2017 Med Household Income</b>	<b>\$133,080</b>	<b>\$120,786</b>	<b>\$114,294</b>
<b>2017 Households by Household Inc:</b>			
<\$25,000	83	575	2,185
\$25,000 - \$50,000	146	1,074	2,945
\$50,000 - \$75,000	61	799	2,437
\$75,000 - \$100,000	81	1,054	3,135
\$100,000 - \$125,000	143	1,160	3,184
\$125,000 - \$150,000	99	797	2,351
\$150,000 - \$200,000	228	1,454	3,509
\$200,000+	251	2,020	5,299

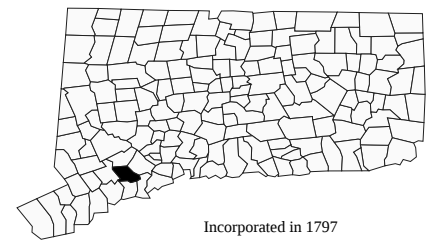


# Trumbull, Connecticut

CERC Town Profile 2017 *Produced by The CT Data Collaborative*

**Town Hall**  
5866 Main Street  
Trumbull, CT 06611  
(203) 452-5006

*Belongs To*  
Fairfield County  
LMA Bridgeport - Stamford  
Metropolitan Planning Area



Incorporated in 1797

## Demographics

### Population

	Town	County	State
2000	34,243	882,567	3,405,565
2010	36,018	916,829	3,574,097
2011-2015	36,571	939,983	3,593,222
2020	35,389	944,692	3,604,591
'15 - '20 Growth / Yr	-0.7%	0.1%	0.1%

	Town	County	State
Land Area (sq. miles)	23	625	4,842
Pop./Sq. Mile (2011-2015)	1,568	1,504	742
Median Age (2011-2015)	43	40	40
Households (2011-2015)	12,123	334,320	1,352,583
Med. HH Inc. (2011-2015)	\$111,312	\$84,233	\$70,331

### Race/Ethnicity (2011-2015)

	Town	County	State
White Alone, Non-Hispanic	30,101	602,311	2,487,119
Black Alone, Non-Hispanic	1,262	105,683	370,501
Asian	1,541	47,398	150,670
Native American	8	2,234	8,908
Other/Multi-Race	1,273	89,549	283,800
Hispanic (Any Race)	2,907	171,720	526,508

	Town	County	State
Poverty Rate (2011-2015)	2.2%	9.0%	10.5%

### Educational Attainment (2011-2015)

	Town	County	State
High School Graduate	4,990	20%	673,973
Associates Degree	1,851	8%	183,289
Bachelors or Higher	12,630	51%	925,607

### Age Distribution (2011-2015)

	0-4	5-14	15-24	25-44	45-64	65+	Total
Town	1,896 5%	5,644 15%	4,424 12%	7,370 20%	10,528 29%	6,709 18%	36,571 100%
County	54,513 6%	128,603 14%	121,995 13%	233,955 25%	268,138 29%	132,779 14%	939,983 100%
State	191,445 5%	446,058 12%	492,864 14%	885,518 25%	1,035,059 29%	542,278 15%	3,593,222 100%

## Economics

### Business Profile (2015)

Sector	Units	Employment
Total - All Industries	1,065	15,417
23 - Construction	114	298
31-33 - Manufacturing	17	638
44-45 - Retail Trade	134	2,766
54 - Professional, Scientific, and Technical Services	165	1,236
62 - Health Care and Social Assistance	137	3,185
Total Government	21	1,562

### Top Five Grand List (2014)

	Amount
Trumbull Shopping Center	\$202,300,000
Digital 60 & 80 Merritt LLC	\$119,042,660
United Illuminating	\$34,458,940
Conopoc Inc	\$29,916,910
Avalon Bay Communities	\$28,906,740
Net Grand List (SFY 2014-2015)	\$4,517,559,428

### Major Employers (2014)

Unilever	Cooper Surgical Inc.
Genesis HealthCare - St. Joseph's Center	Affinion Group
Target Corp	

## Education

### 2016-2017 School Year

	Grades	Enrollment
Trumbull School District	PK-12	6,685

### Smarter Balanced Test Percent Above Goal (2015-2016)

	Grade 3		Grade 4		Grade 8	
	Town	State	Town	State	Town	State
Math	85.9%	52.8%	80.6%	47.9%	74.4%	40.3%
ELA	81.1%	53.9%	84.5%	55.5%	81.7%	55.5%

### Pre-K Enrollment (PSIS)

	2016-2017
Trumbull School District	232

### Rate of Chronic Absenteeism (2015-2016)

Connecticut	All 9.6%
Trumbull School District	4.9%

### 4-Year Cohort Graduation Rate (2014-2015)

	All	Female	Male
Connecticut	87.2%	90.1%	84.4%
Trumbull School District	98.1%	98.5%	97.7%

# Trumbull, Connecticut

CERC Town Profile 2017



Connecticut  
Economic  
Resource Center

## Government

Government Form: Selectman - Council

Total Revenue (2015)	\$170,470,944	Total Expenditures (2015)	\$170,497,669	Annual Debt Service (2015)	\$13,053,134
Tax Revenue	\$144,465,175	Education	\$111,191,120	As % of Expenditures	7.7%
Non-tax Revenue	\$26,005,769	Other	\$59,306,549	Eq. Net Grand List (2015)	\$6,660,963,078
Intergovernmental	\$18,574,675	Total Indebtedness (2015)	\$90,938,640	Per Capita	\$181,854
Per Capita Tax (2015)	\$3,912	As % of Expenditures	53.3%	As % of State Average	122.7%
As % of State Average	140.2%	Per Capita	\$2,483	Moody's Bond Rating (2015)	Aa2
		As % of State Average	102.2%	Actual Mill Rate (2015)	32.16
				Equalized Mill Rate (2015)	21.51
				% of Net Grand List Com/Ind (2015)	18.2%

## Housing/Real Estate

Housing Stock (2011-2015)

	Town	County	State
Total Units	12,542	363,556	1,491,786
% Single Unit (2011-2015)	87.3%	58.0%	59.2%
New Permits Auth (2015)	8	2,598	6,077
As % Existing Units	0.1%	0.7%	0.4%
Demolitions (2015)	3	602	1,230
Home Sales (2013)	490	7,243	26,310
Median Price	\$396,500	\$416,000	\$270,500
Built Pre-1950 share	18.2%	29.0%	29.3%
Owner Occupied Dwellings	10,709	228,381	906,227
As % Total Dwellings	88.3%	68.3%	67.0%
Subsidized Housing (2015)	588	33,890	172,556

Distribution of House Sales (2013)

	Town	County	State
Less than \$100,000	5	439	3,417
\$100,000-\$199,999	30	890	7,522
\$200,000-\$299,999	114	1,117	6,031
\$300,000-\$399,999	163	980	3,380
\$400,000 or More	178	3,817	5,960

## Labor Force

Place of Residence (2015)

	Town	County	State
Labor Force	18,143	480,603	1,890,506
Employed	17,282	454,843	1,782,269
Unemployed	861	25,760	108,237
Unemployment Rate	4.7%	5.4%	5.7%

Connecticut Commuters (2014)

Commuters Into Town From:	Town Residents Commuting To:
Bridgeport, CT	2,563
Trumbull, CT	1,801
Stratford, CT	1,108
Shelton, CT	840
Milford, CT	685
Monroe, CT	507
Fairfield, CT	499
Bridgeport, CT	1,931
Trumbull, CT	1,801
Fairfield, CT	1,381
Stamford, CT	1,260
Norwalk, CT	1,217
Stratford, CT	868
Shelton, CT	800

Place of Work (2015)

	Town	County	State
Units	1,065	34,717	116,246
Total Employment	15,417	422,675	1,662,822
2012-'15 AAGR	89.9%	134.2%	100.0%
Mfg Employment	638	33,938	79,612

## Other Information

Crime Rate (2014)

	Town	State
Per 100,000 residents	1,742	2,167

Distance to Major Cities

	Miles
Hartford	44
New York City	56
Providence	100
Boston	135
Montreal	296

Residential Utilities

<b>Electric Provider</b>
The United Illuminating Co. (800) 257-0141
<b>Gas Provider</b>
Southern Connecticut Gas Company (203) 382-8111
<b>Water Provider</b>
Aquarion Water Company (800) 732-9678
<b>Cable Provider</b>
Charter Communications of Western CT (800) 827-8288

Library (2016)

	Town
Circulation per Capita	12.14
Internet Use per Visit	0.09

Families Receiving (2014)

	Town
Temporary Family Assistance (TFA)	15

Population Receiving (2014)

	Town
Supplemental Nutrition Assistance Program (SNAP)	488