

444 Westport Avenue, Norwalk, Connecticut



THE MOST AFFORDABLE TRUE OFFICE SPACE FOR LEASE IN THIS MARKET

2ND FLOOR

1,930 square feet

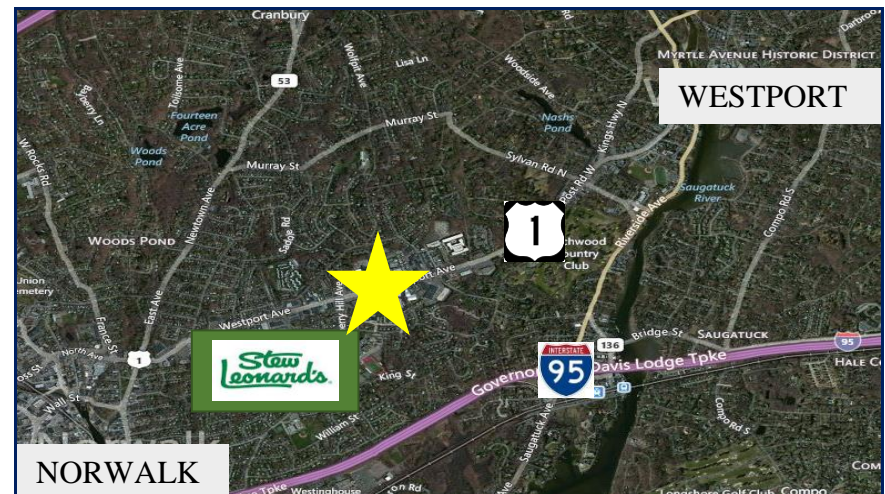
2,296 square feet

4,226 TOTAL CONTIGUOUS SPACE

Lease: \$16 psf plus utilities

Situated between the Westport town line, (Whole Foods) and Stew Leonards, this office location is convenient to all Westport and Norwalk amenities.

Attractive newly fit-up office space offered at below market rates! Full floor opportunity for office or show room potential with great signage and identity.



For additional information please contact:
David Fugitt, SIOR 203-226-7101 ext. 5, email david@vidalwettenstein.com
Robert Lewis ext. 7, email robert@vidalwettenstein.com

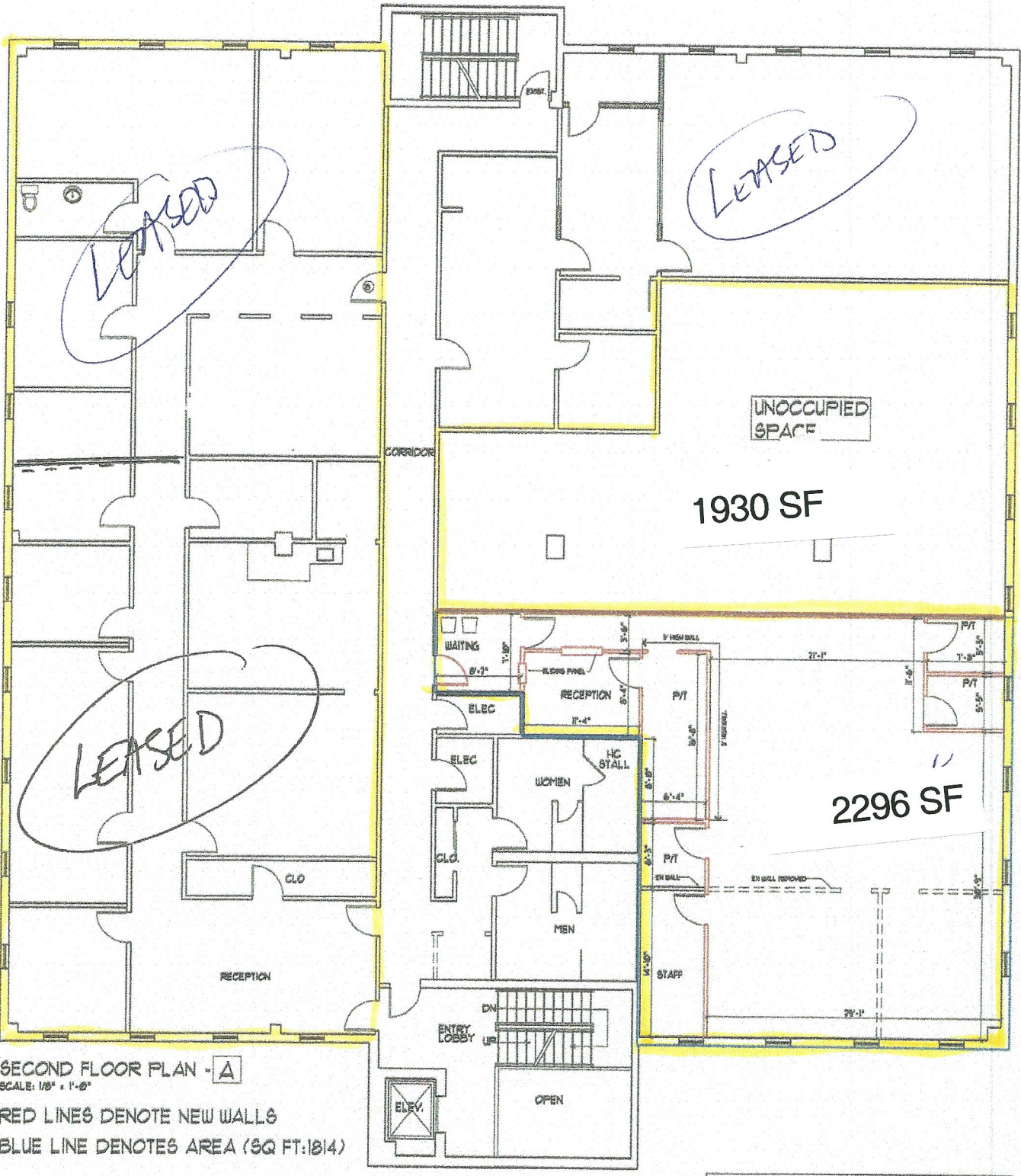
All information from sources deemed reliable and is submitted subject to errors, omissions, change of price, rental, and property sale and withdrawal notice.



Individual Members
Society of Industrial and Office Realtors

VIDAL/WETTENSTEIN, LLC

719 Post Road East, Westport, CT 06880
www.vidalwettenstein.com



SECOND FLOOR PLAN - A
 SCALE: 1/8" = 1'-0"
 RED LINES DENOTE NEW WALLS
 BLUE LINE DENOTES AREA (SQ FT:1814)



VIDAL/WETTENSTEIN, LLC

Real Estate for Business & Investment

Make an offer!



Pylon Sign on US-1



Lobby



Three-story high lobby



Ample Covered Parking



Individual Members
Society of Industrial and Office Realtors

719 Post Road East, Westport, CT 06880

Phone: (203) 226-7101

www.vidalwettenstein.com