

# SPACE FOR LEASE

326 Westport Avenue, Norwalk, CT



To arrange a tour contact:  
**David Fugitt | 203-226-7101 Ext 5**  
[david@vidalwettenstein.com](mailto:david@vidalwettenstein.com)



VIDAL/WETTENSTEIN, LLC



719 Post Road East, Westport, CT 06880  
[www.vidalwettenstein.com](http://www.vidalwettenstein.com)

All information from sources deemed reliable and is submitted subject to errors, omissions, change of price, rental, and property sale and withdrawal notice.



# 326 Westport Avenue, Norwalk, CT

## RETAIL / SHOWROOM / OFFICE

*Many other uses allowed*

- Superb visibility with signage on Westport Avenue
- Traffic count approx. 20,000 cars per day

### Neighboring tenants:

The Cat's Place, Marshalls, Aitoro Appliance,  
Staples, Advanced Auto Parts, Petco, CVS,  
Jeep Dodge Ram Dealership, Carly Paint and  
Hardware, Bankwell, TD Bank, First County Bank  
Stew Leonard's

### SPACE DETAILS

Total Square Feet: 2,942± SF

Direct visibility from Westport Avenue

Business zone

Abundant parking

Lease price: \$16.50 PSF NNN



Location: Convenient to exit 16 & 17 of I-95.



**SIO R** Individual Members  
Society of Industrial & Office Realtors

**VIDAL/WETTENSTEIN, LLC**

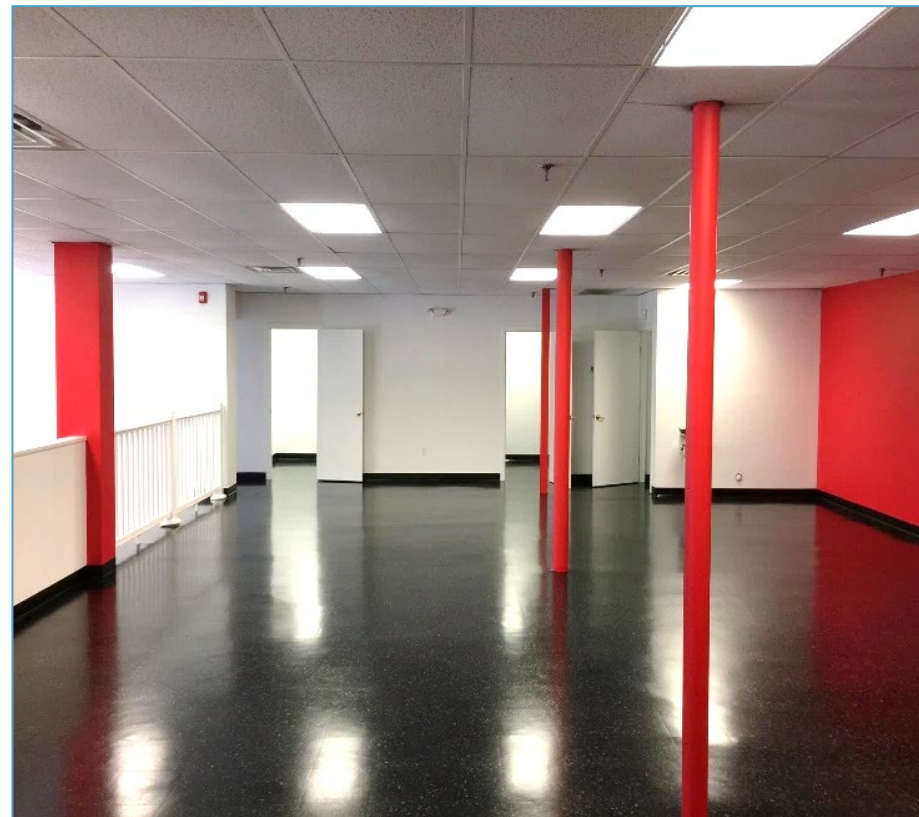


719 Post Road East, Westport, CT 06880  
[www.vidalwettenstein.com](http://www.vidalwettenstein.com)

All information from sources deemed reliable and is submitted subject to errors, omissions, change of price, rental, and property sale and withdrawal notice.

# 326 Westport Avenue, Norwalk, CT

## Interior photos





# 326 Westport Avenue, Norwalk, CT

Total Square Feet: 2,942± SF

Approx. 20,000 cars per day



**SIOR** Individual Members  
Society of Industrial & Office Realtors

## VIDAL/WETTENSTEIN, LLC



719 Post Road East, Westport, CT 06880  
[www.vidalwettenstein.com](http://www.vidalwettenstein.com)

All information from sources deemed reliable and is submitted subject to errors, omissions, change of price, rental, and property sale and withdrawal notice.