

FOR SALE

324 Elm Street, Monroe, CT



To arrange a tour contact:

Bruce Wettenstein, SIOR | 203-226-7101 Ext 2

bruce@vidalwettenstein.com



VIDAL/WETTENSTEIN, LLC



719 Post Road East, Westport, CT 06880
www.vidalwettenstein.com

All information from sources deemed reliable and is submitted subject to errors, omissions, change of price, rental, and property sale and withdrawal notice.

324 Elm Street, Monroe, CT

Business condo unit presently used as a medical practice.

1,129± Square Feet

Fully air conditioned

Individual rooms with sinks

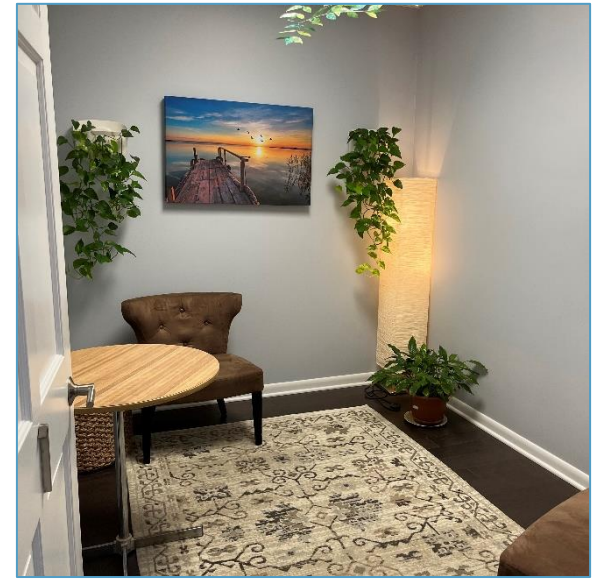
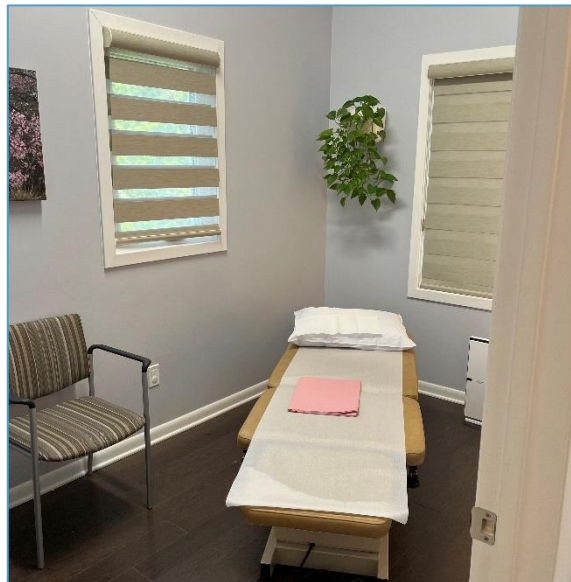
Waiting room and reception

Ample parking

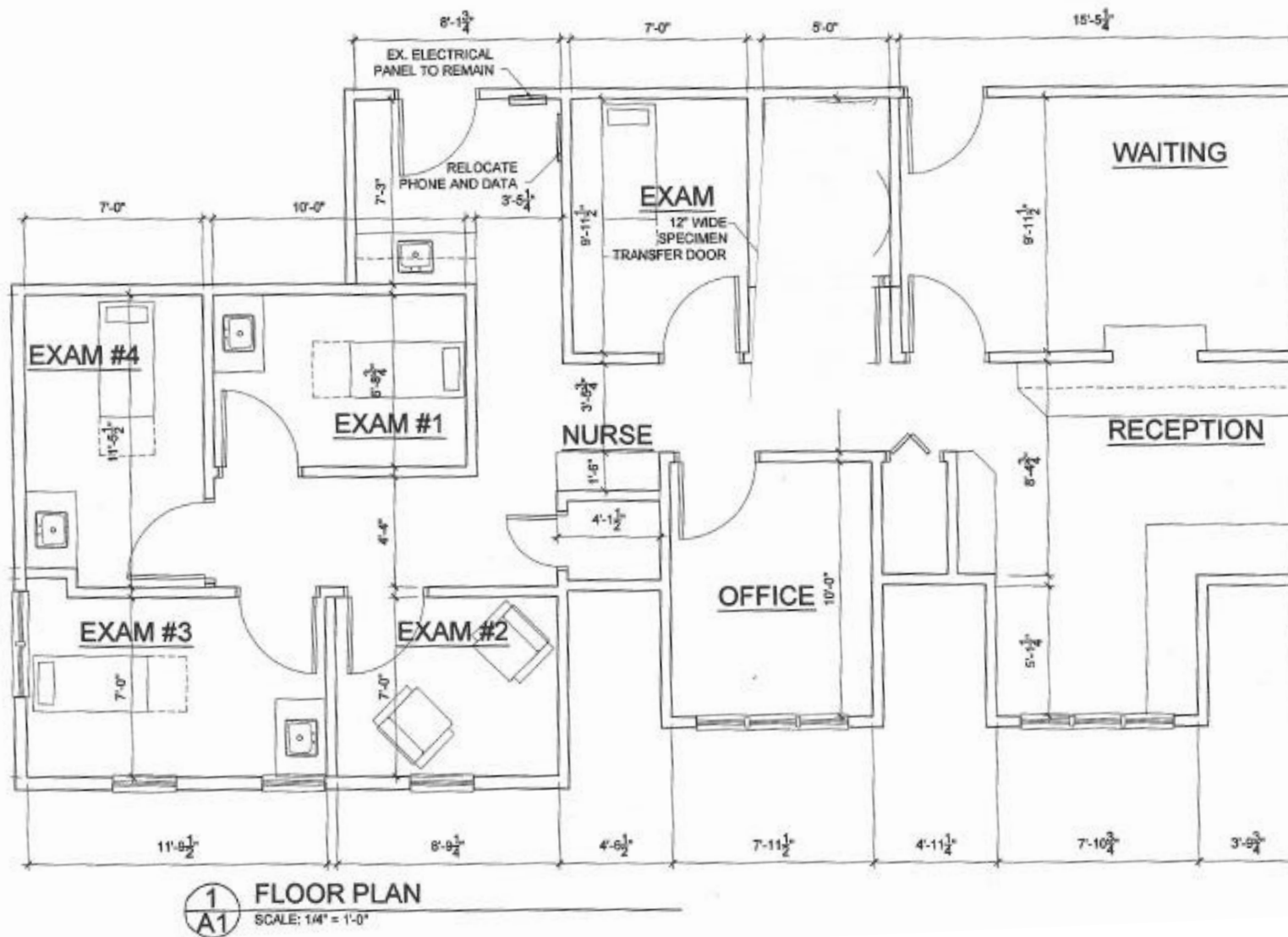
For Sale: \$260,000

Taxes: \$4246 annually

Taxes and Cam, \$461 per month



324 Elm Street, Monroe, CT



General

ACS, 2015–2019	Monroe	State
Land Area <i>mi</i> ²	26	4,842
Population Density <i>people per mi</i> ²	750	738
Number of Households	6,673	1,370,746
Median Age	43.3	41.0
Median Household Income	\$118,669	\$78,444
Poverty Rate	3%	10%

Economy

Top Industries

CT Department of Labor, 2019	Employment	Employers	Av. Wages
1 Retail Trade	834	66	\$37,651
2 Manufacturing	778	30	\$54,101
3 Local Government	737	15	\$66,825
4 Accommodation & Food Services	735	57	\$17,819
5 Health Care & Social Assistance	436	47	\$53,387
All Industries	5,482	671	\$51,388

SOTS Business Registrations

Secretary of the State, June 2021

Total Active Businesses 2,492

New Business Registrations by Year

2001	125	2006	152	2011	132	2016	149
2002	147	2007	149	2012	157	2017	177
2003	168	2008	141	2013	141	2018	188
2004	165	2009	134	2014	151	2019	157
2005	179	2010	166	2015	159	2020	174

Key Employers

Data from municipalities, 2021

- 1 Seymour Sheridan Inc
- 2 Victorinox Swiss Army Inc
- 3 Victorinox Swiss Army
- 4 Northeast Laser Engraving
- 5 Next Street

Demographics

ACS, 2015–2019

Age Distribution

		State
Under 10	2,069 11%	11%
10 to 19	3,241 17%	13%
20 to 29	1,801 9%	13%
30 to 39	1,970 10%	12%
40 to 49	2,735 14%	13%
50 to 59	3,384 17%	15%
60 to 69	2,209 11%	12%
70 to 79	1,495 8%	7%
80 and over	642 3%	5%

Race and Ethnicity

		State
Asian <i>Non-Hispanic (NH)</i>	4%	4%
Black <i>NH</i>	2%	10%
Hispanic or Latino/a <i>Of any race</i>	7%	16%
White <i>NH</i>	85%	67%
Other <i>NH, incl. American Indian, Alaska Native, Native Hawaiian or Pacific Islander</i>	2%	3%

Language Spoken at Home

	Monroe	State
English	78	87%
Spanish	4	12%

Educational Attainment

	Monroe	State
High School Diploma Only	23	27%
Associate Degree	8	10%
Bachelor's Degree	22	27%
Master's Degree or Higher	17	22%

Housing

ACS, 2015–2019

	Monroe	State
Median Home Value	\$370,200	\$275,400
Median Rent	\$1,364	\$1,180
Housing Units	7,013	1,516,629

Owner-Occupied
Detached or Semi-Detached
Vacant

	Monroe	State
Owner-Occupied	66	91%
Detached or Semi-Detached	64	91%
Vacant	5	10%

Schools

CT Department of Education, 2020-21

School Districts

	Available Grades	Total Enrollment	Pre-K Enrollment	4-Year Grad Rate (2018-19)
Monroe School District	PK-12	3,179	36	98%
Statewide	-	513,079	15,300	88%

Smarter Balanced Assessments

Met or exceeded expectations, 2018/19

	Math	ELA
Monroe School District	73%	82%
Statewide	48%	56%

Monroe, Connecticut

19,546

Labor Force

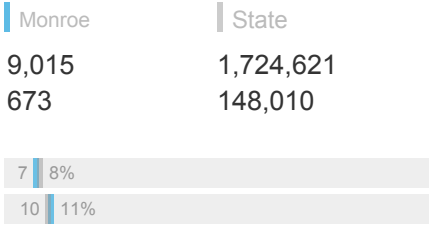
CT Department of Labor, 2020

	Monroe	State
Employed	9,015	1,724,621
Unemployed	673	148,010

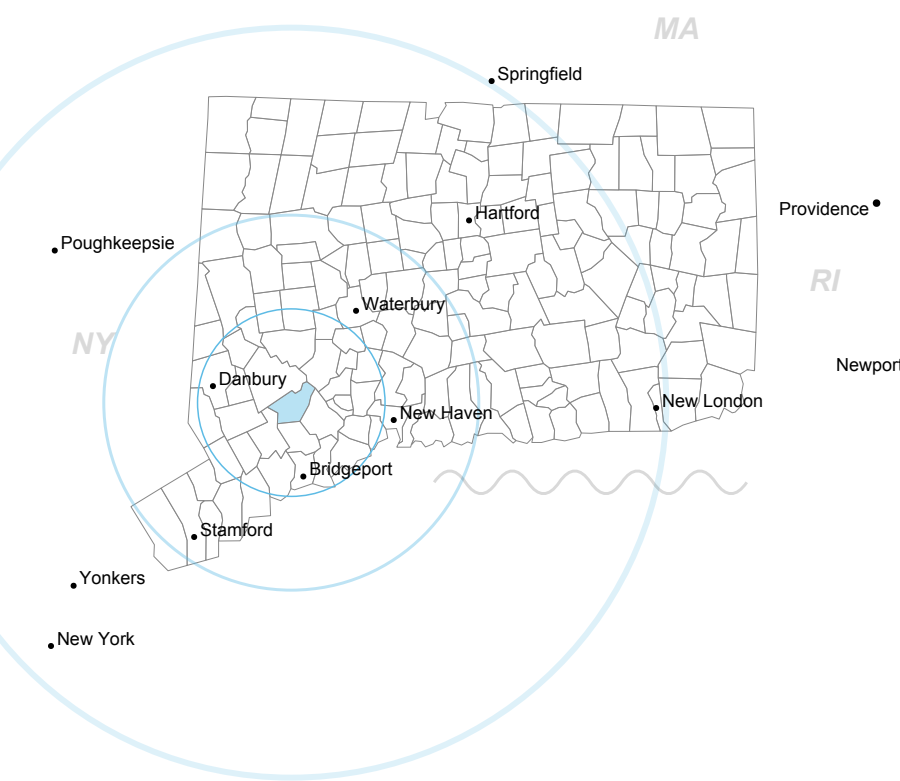
Unemployment Rate

Self-Employment Rate*

*ACS, 2015–2019



Catchment Areas of 15mi, 30mi, and 60mi



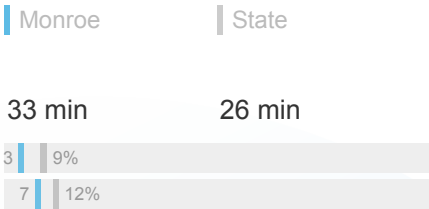
Access

ACS, 2015–2019

	Monroe	State
Mean Commute Time <i>Pre-Covid</i>	33 min	26 min

No Access to a Car

No Internet Access



Commute Mode

Public Transport

Walking or Cycling

Driving

Working From Home *Pre-Covid*



Public Transit

CTtransit Service

Other Public Bus Operations

Train Service



Fiscal Indicators

CT Office of Policy and Management, SFY 2017-18

Municipal Revenue

Total Revenue	\$97,355,639
Property Tax Revenue	\$76,743,249
per capita	\$3,944
per capita, as % of state av.	130%
Intergovernmental Revenue	\$18,055,609
Revenue to Expenditure Ratio	104%

Boston*

Municipal Expenditure

Total Expenditure	\$93,674,089
Educational	\$67,010,629
Other	\$26,663,460

Grand List

Equalized Net Grand List	\$3,175,730,981
per capita	\$163,109
per capita, as % of state av.	106%
Comm./Indust. Share of Net Grand List	10%

Actual Mill Rate

Equalized Mill Rate

Municipal Debt

Moody's Rating	Aa2
Total Indebtness	\$40,234,951
per capita	\$2,067
per capita, as % of state av.	80%
as percent of expenditures	43%

Annual Debt Service

as % of expenditures



Search AdvanceCT's **SiteFinder**, Connecticut's most comprehensive online database of available commercial properties.
ctdata.org/sitefinder

About Town Profiles

The Connecticut Town Profiles are two-page reports of demographic and economic information for each of Connecticut's 169 municipalities. Reports for 2016-2019 are available from profiles.ctdata.org.

Feedback is welcome, and should be directed to info@ctdata.org.

These Profiles can be used free of charge by external organizations, as long as *AdvanceCT* and *CTData Collaborative* are cited. No representation or warranties, expressed or implied, are given regarding the accuracy of this information.