

SUPERBLY LOCATED OFFICE SPACE FOR LEASE

SEDONA PLAZA



4,034± Square Feet

- 2nd floor office space
- Great accessibility on Westport Avenue
- Elevatored building
- Lease rate: \$18.00 PSF gross + separately metered utilities

295 Westport Avenue, Norwalk Connecticut

Close proximity to all amenities including, banking, restaurants, and shopping.

Easy access to I-95 and Merritt Parkway.

Contact: Robert Lewis 203-226-7101 Ext 7
robert@vidalwettenstein.com



All information from sources deemed reliable and is submitted subject to errors, omissions, change of price, rental, and property sale and withdrawal notice.



SIOR

Individual Members

Society of Industrial and Office Realtors

VIDAL/WETTENSTEIN, LLC

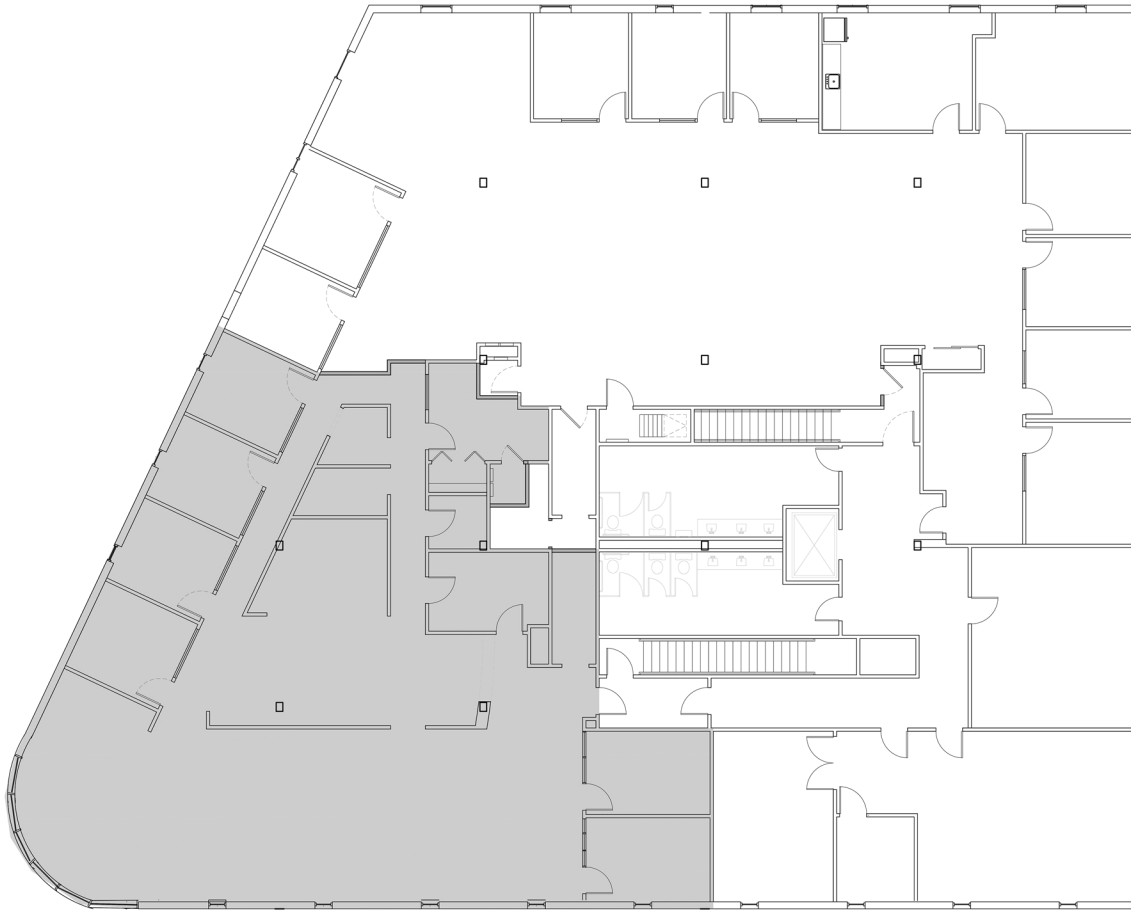
719 Post Road East, Westport, CT 06880

www.vidalwettenstein.com

Seal:

OWNERSHIP AND USE OF DOCUMENTS
THE SET OF DRAWINGS AND SPECIFICATIONS AS INSTRUMENTS OF PROFESSIONAL SERVICE ARE AND SHALL REMAIN THE PROPERTY OF THE ARCHITECT. THESE DOCUMENTS ARE NOT TO BE USED IN WHOLE OR IN PART IN ANY OTHER PROJECT OR BUSINESS, OR BY ANY OTHER PARTY, WITHOUT THE EXPRESS WRITTEN AUTHORIZATION OF LIVINGSTONE DESIGN, LLC.

KEY PLAN:



TENANT #2
RENTABLE S.F. = 4,034 S.F.

DATE	DESCRIPTION
03.06.19	ISSUED FOR PERMIT

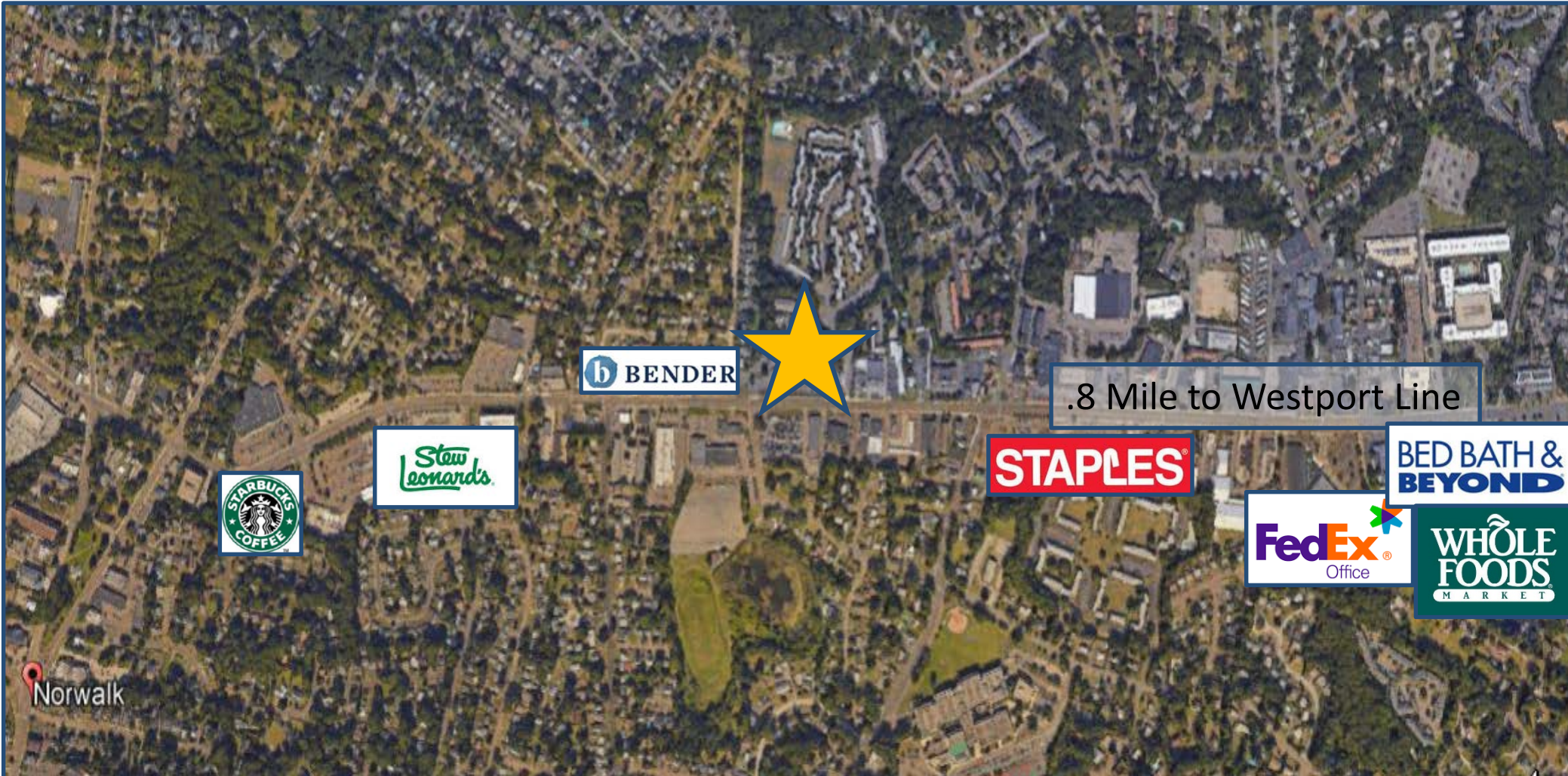
PROJECT:
EXISTING OFFICE BUILDING:
295 Westport Avenue
Norwalk, Connecticut

DRAWING TITLE:
PROPOSED
SECOND FLOOR PLAN

1 SECOND FLOOR PLAN
A-1.0 SCALE: 1/8"=1'-0"

Remarks:	DATE: 03.06.19
	PROJECT NO:
	DRAWING BY: JL/FD
	CHK BY:
	SHEET NUMBER:
	A-1.0
	CAD FILE:

295 Westport Avenue, Norwalk Connecticut



All information from sources deemed reliable and is submitted subject to errors, omissions, change of price, rental, and property sale and withdrawal notice.



SIOR

Individual Members
Society of Industrial and Office Realtors

VIDAL/WETTENSTEIN, LLC

Sedona Shopping Plaza

719 Post Road East, Westport, CT 06880

www.vidalwettenstein.com