

# 260-284 Quarry Road, Milford, CT

## Professional Office/Industrial Units Available for Lease



**1,300 ± SF Remaining**

12' ceiling height

Air conditioned

Exclusive loading with two drive in doors

Wet sprinkler system

Gas heating

Ideal location off Exit 40 of I-95

**\$8.75 PSF NNN (\$3.85)**

### Contact Information

Scott Zakos

203-226-7101 Ext #4

[scott@vidalwettenstein.com](mailto:scott@vidalwettenstein.com)

Located in Quarry Road Business Park

All information from sources deemed reliable and is submitted subject to errors, omissions, change of price, rental, and property sale and withdrawal notice.



SIOR

Individual Members  
Society of Industrial and Office Realtors

VIDAL/WETTENSTEIN, LLC

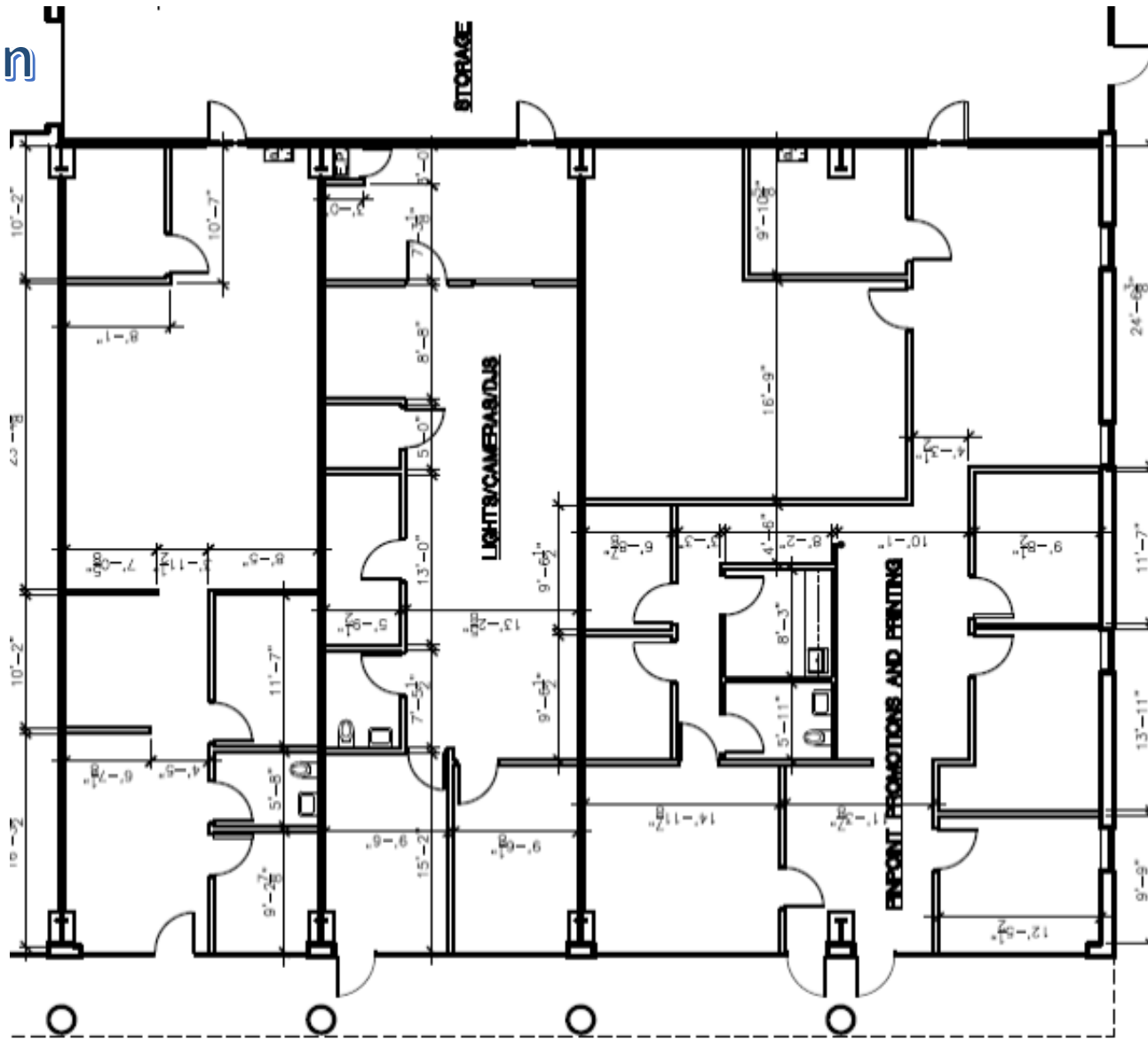


719 Post Road East, Westport, CT 06880

[www.vidalwettenstein.com](http://www.vidalwettenstein.com)

# 260-268 Quarry Road, Milford, CT

## Floor Plan



All information from sources deemed reliable and is submitted subject to errors, omissions, change of price, rental, and property sale and withdrawal notice.



SIOR

Individual Members  
Society of Industrial and Office Realtors

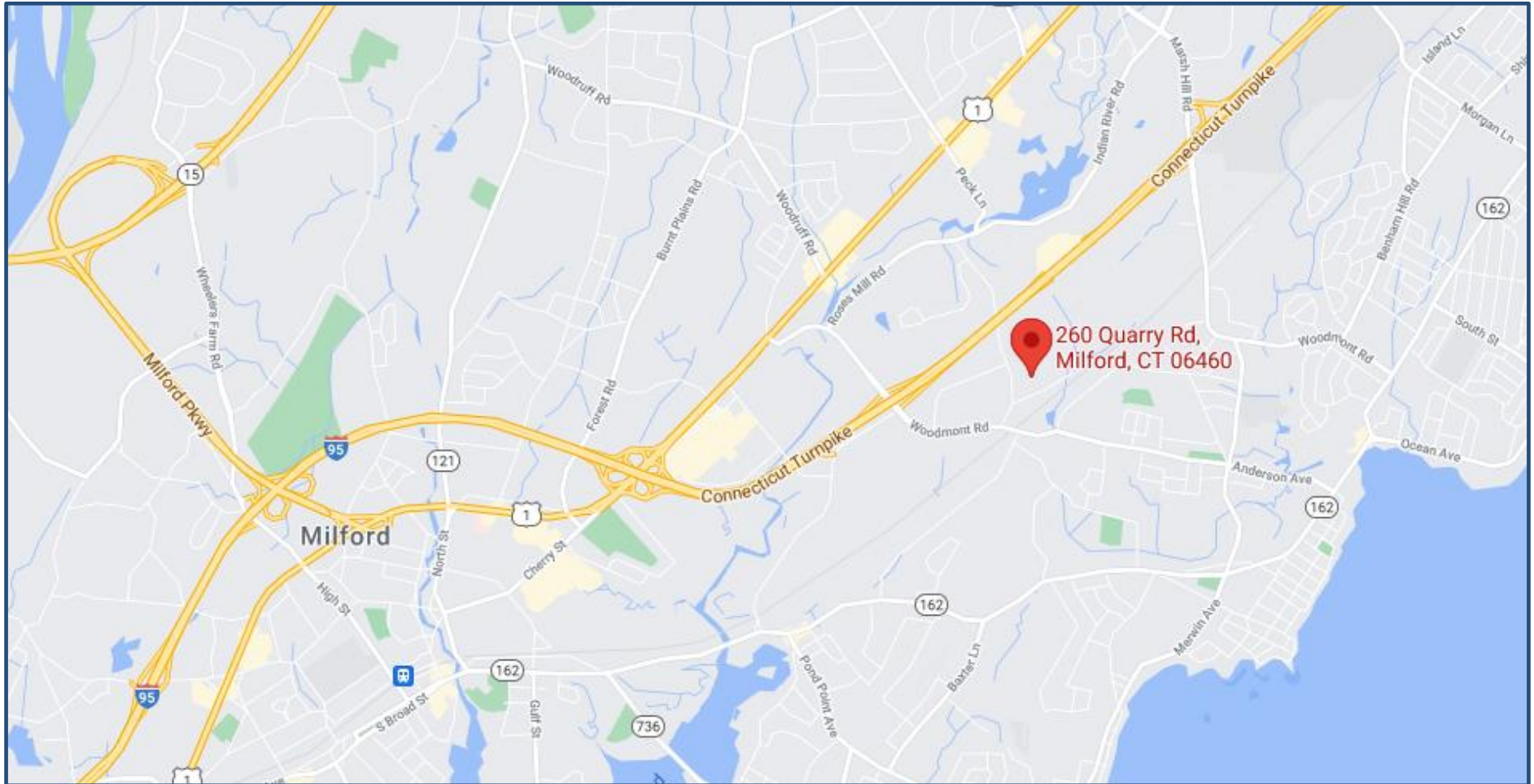
VIDAL/WETTENSTEIN, LLC



719 Post Road East, Westport, CT 06880  
www.vidalwettenstein.com

# 260-268 Quarry Road, Milford, CT

## Map



All information from sources deemed reliable and is submitted subject to errors, omissions, change of price, rental, and property sale and withdrawal notice.



**SIOR**

Individual Members  
Society of Industrial and Office Realtors

**VIDAL/WETTENSTEIN, LLC**



719 Post Road East, Westport, CT 06880  
[www.vidalwettenstein.com](http://www.vidalwettenstein.com)