

INDUSTRIAL BUILDING FOR SALE

20,062± Total Building Sq. Ft.



Very attractive building with circular front office and conference room design.

240 Hathaway Drive
Stratford, Connecticut

.92 Acres

MA Zone

14' and 20' ceiling height

1 10x10 and 2 8x10 loading docks, with levelers

800 amps, 240-277 volts, 3ph, 4 wire

For sale, \$2,187,000

For additional information contact:

Bruce Wettenstein, SIOR

203 226-7101 Ext 2 - bruce@vidalwettenstein.com

All information from sources deemed reliable and is submitted subject to errors, omissions, change of price, rental, and property sale and withdrawal notice.



SIOR

Individual Members

Society of Industrial and Office Realtors

VIDAL/WETTENSTEIN, LLC

719 Post Road East, Westport, CT 06880

www.vidalwettenstein.com

INDUSTRIAL BUILDING FOR SALE

240 Hathaway Drive, Stratford, Connecticut

- 20,062± total building sq. ft., comprised of 4,169 sq. ft. office, balance high bay and production
- Block and steel construction
- Poured concrete floor
- Parking for 30± cars
- Single row columns in production area
- Built in 1976
- Heat, overhead natural gas forced air
- Air-conditioned office and facility managers office
- Down draft fans throughout
- Air compressor and lines in place
- 2 wall vents
- Trash compactor opening
- Small kitchen area



All information from sources deemed reliable and is submitted subject to errors, omissions, change of price, rental, and property sale and withdrawal notice.



SIOR

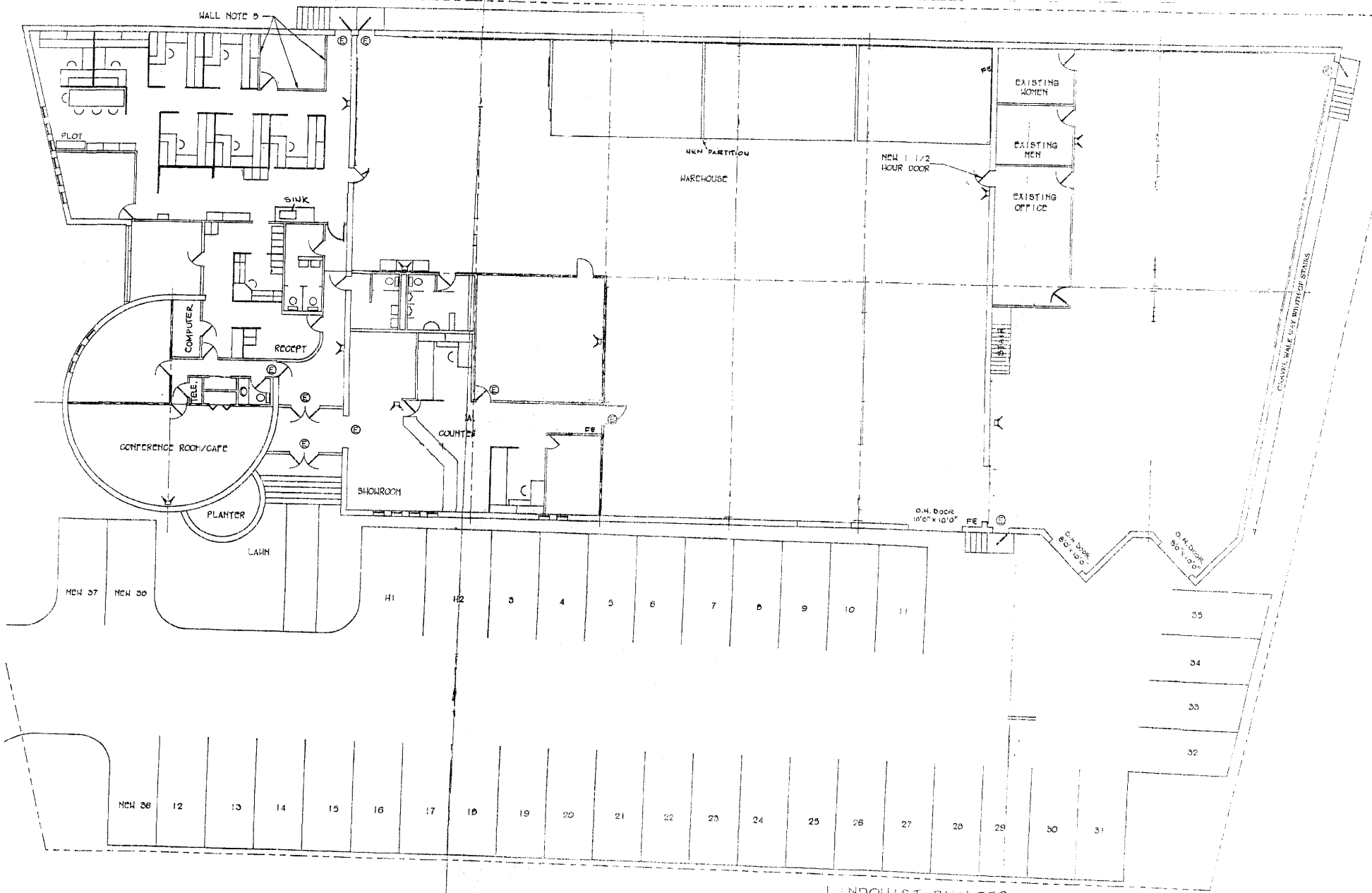
Individual Members

Society of Industrial and Office Realtors

VIDAL/WETTENSTEIN, LLC

719 Post Road East, Westport, CT 06880

www.vidalwettenstein.com



LINDQUIST BUILDERS SUPPLY

HATHAWAY DRIVE STRATFORD, CT

25 OCTOBER 1989