

2119 Post Road, Fairfield, Connecticut



Located in the Heart of Fairfield

MEDICAL OFFICE AVAILABLE

Elevator to 2nd floor, 2,640± sq. ft. professional medical space, multiple exam rooms, ample parking

Featuring:

- Multiple exam rooms, waiting room, file, storage
- Short walk to all Fairfield center amenities.
- High quality finished space.
- Asking rental rate: \$40.00 per sq ft plus electric

Contact Bruce Wettenstein, SIOR
203.226.7101 ext. 2
Email: bruce@vidalwettenstein.com

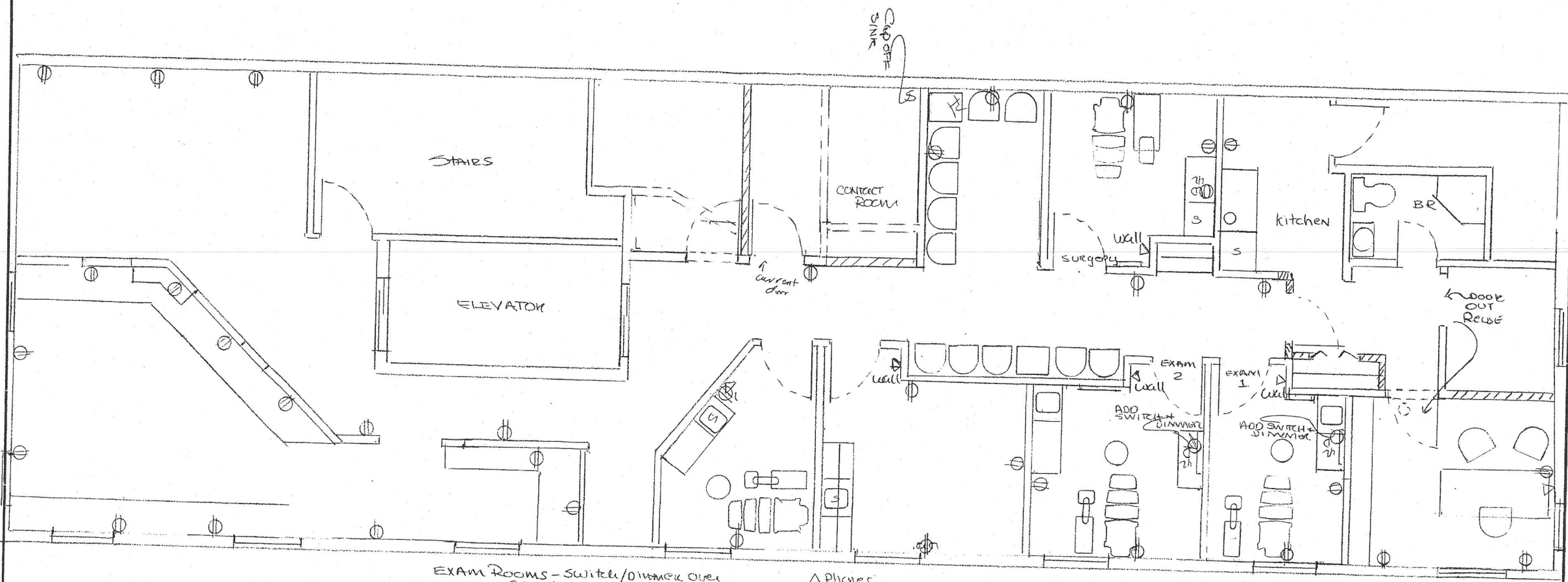
All information from sources deemed reliable and is submitted subject to errors, omissions, change of price, rental, and property sale and withdrawal notice.



Individual Members
Society of Industrial and Office Realtors

VIDAL/WETTENSTEIN, LLC

719 Post Road East, Westport, CT 06880
www.vidalwettenstein.com



EXAM ROOMS - Switch/dimmer over counter.

- △ Phones
- ⊙ Computer
- ⊕ S-D Switch w/Dimmer

- WALLS OUT
- /// NEW WALLS
- EXISTING WALL

DR. SMALL 2112 POST RD FAIRFIELD CONN		2ND FLOOR	
SCALE: 1/4"	APPROVED BY:		DRAWN BY: C. W. W.
DATE: 3-28-00	REVIS		REVISED
Design by Cindy Renovation			
DRAWING NUMBER			