

# 19 LUDLOW ROAD, WESTPORT, CONNECTICUT



## OFFICE SPACE FOR LEASE

1,488 RSF

**Location:** Convenient to downtown & train

**Parking:** Ample garage and surface parking

**Space offers:** A combination of private offices and open space

- Attractive modern building
- Upgraded common areas
- Conveniently located
- Professional setting

Contact David Fugitt, SIOR  
203.226.7101 ext. 5  
Email: [david@vidalwettenstein.com](mailto:david@vidalwettenstein.com)



All information from sources deemed reliable and is submitted subject to errors, omissions, change of price, rental, and property sale and withdrawal notice.



**SIOR**

Individual Members

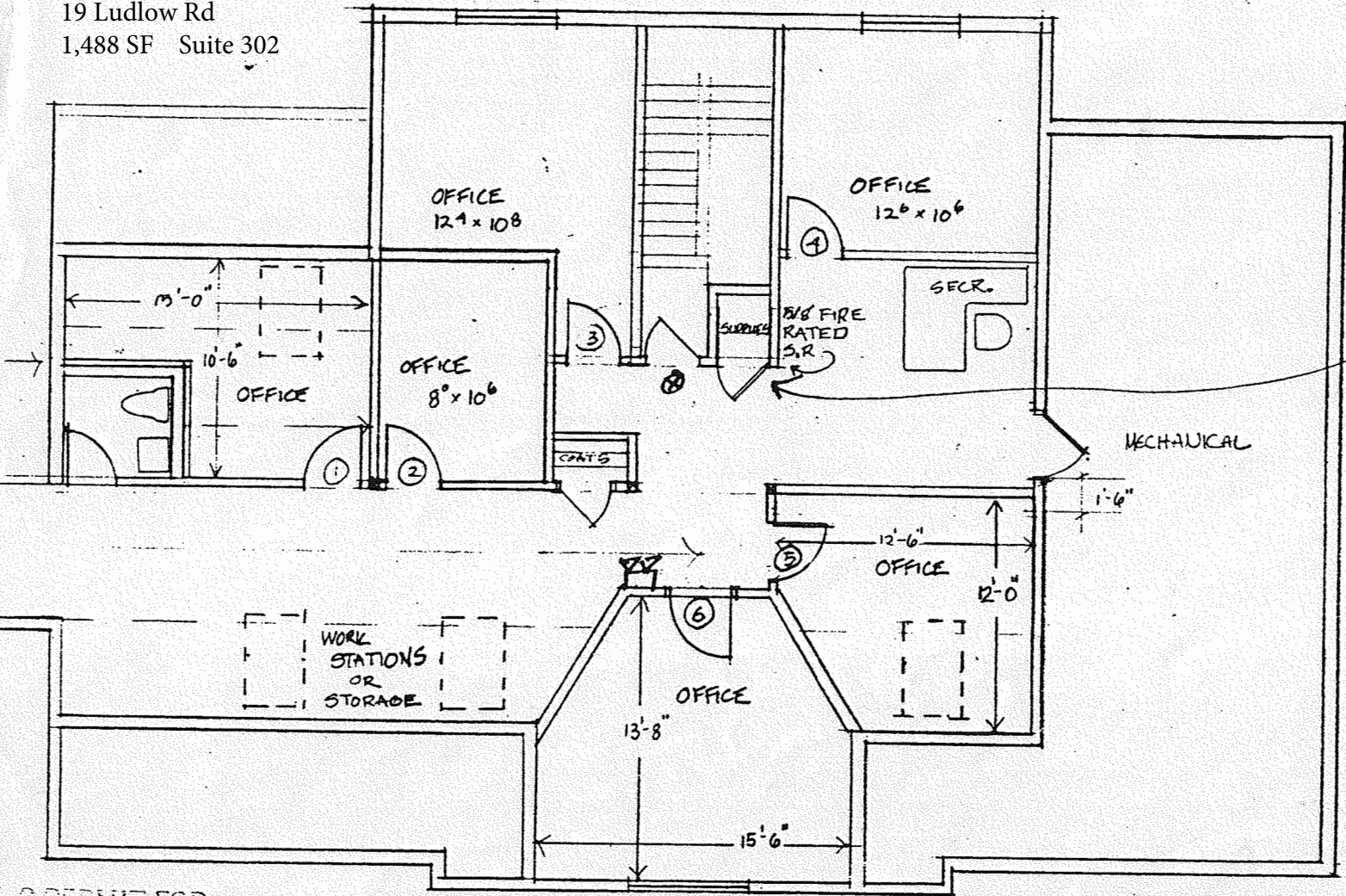
Society of Industrial and Office Realtors

## VIDAL/WETTENSTEIN, LLC

719 Post Road East, Westport, CT 06880

[www.vidalwettenstein.com](http://www.vidalwettenstein.com)

19 Ludlow Rd  
1,488 SF Suite 302



PERMIT FOR