

# Historic Downtown Milford Connecticut



2 Schooner Lane

1,370 rentable square feet

- Off street parking
- Sought after historic downtown location
- Former Real Estate office, multiple entry points
- Off street & municipal parking
- Harbor views, Restaurants & Banks
- Sub dividable
- Walking distance to metro-north train station
- Zone:
  - Milford Center Design Development District
- \$21.50 Gross + Utilities, separate electric & gas

For additional information please contact Scott Zakos

203 226-7101 Ext 4 or [scott@vidalwettenstein.com](mailto:scott@vidalwettenstein.com)

All information from sources deemed reliable and is submitted subject to errors, omissions, change of price, rental, and property sale and withdrawal notice.



**SIOR**

Individual Members

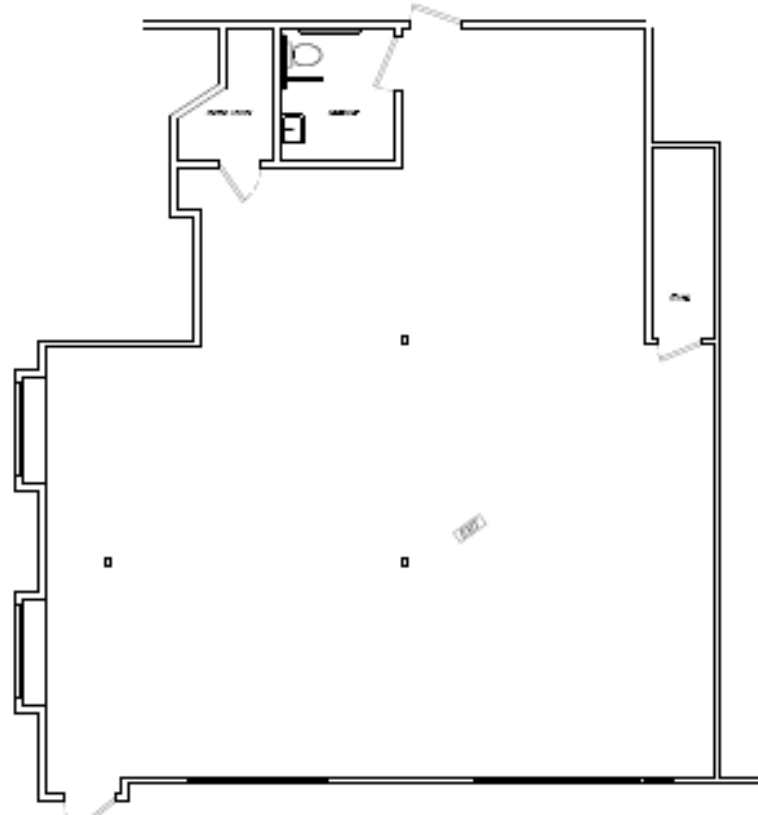
Society of Industrial and Office Realtors

**VIDAL/WETTENSTEIN, LLC**

719 Post Road East, Westport, CT 06880

[www.vidalwettenstein.com](http://www.vidalwettenstein.com)

# Historic Downtown Milford Connecticut



Floor Plan

All information from sources deemed reliable and is submitted subject to errors, omissions, change of price, rental, and property sale and withdrawal notice.



**SIOR**

Individual Members

Society of Industrial and Office Realtors

**VIDAL/WETTENSTEIN, LLC**

719 Post Road East, Westport, CT 06880

[www.vidalwettenstein.com](http://www.vidalwettenstein.com)