

# 300 Honeyspot Road Stratford, Connecticut

SPACE FOR LEASE



Located directly off of exit 31 of I-95

Contact Bruce Wettstein, SIOR

203.226.7101 ext. 2

Email: [bruce@vidalwettenstein.com](mailto:bruce@vidalwettenstein.com)

2,875 SQUARE FEET, EXPANDABLE  
Up to 5,500 SQUARE FEET

*Ideal for Wholesale*

Retail Showroom / Warehouse /  
Billboard Available Over Looking I-95

- Loading dock
- Air conditioned showroom
- Ample parking
- Gas heat, city sewer, city water
- \$10.00 PSF NNN

All information from sources deemed reliable and is submitted subject to errors, omissions, change of price, rental, and property sale and withdrawal notice.



**SIOR**

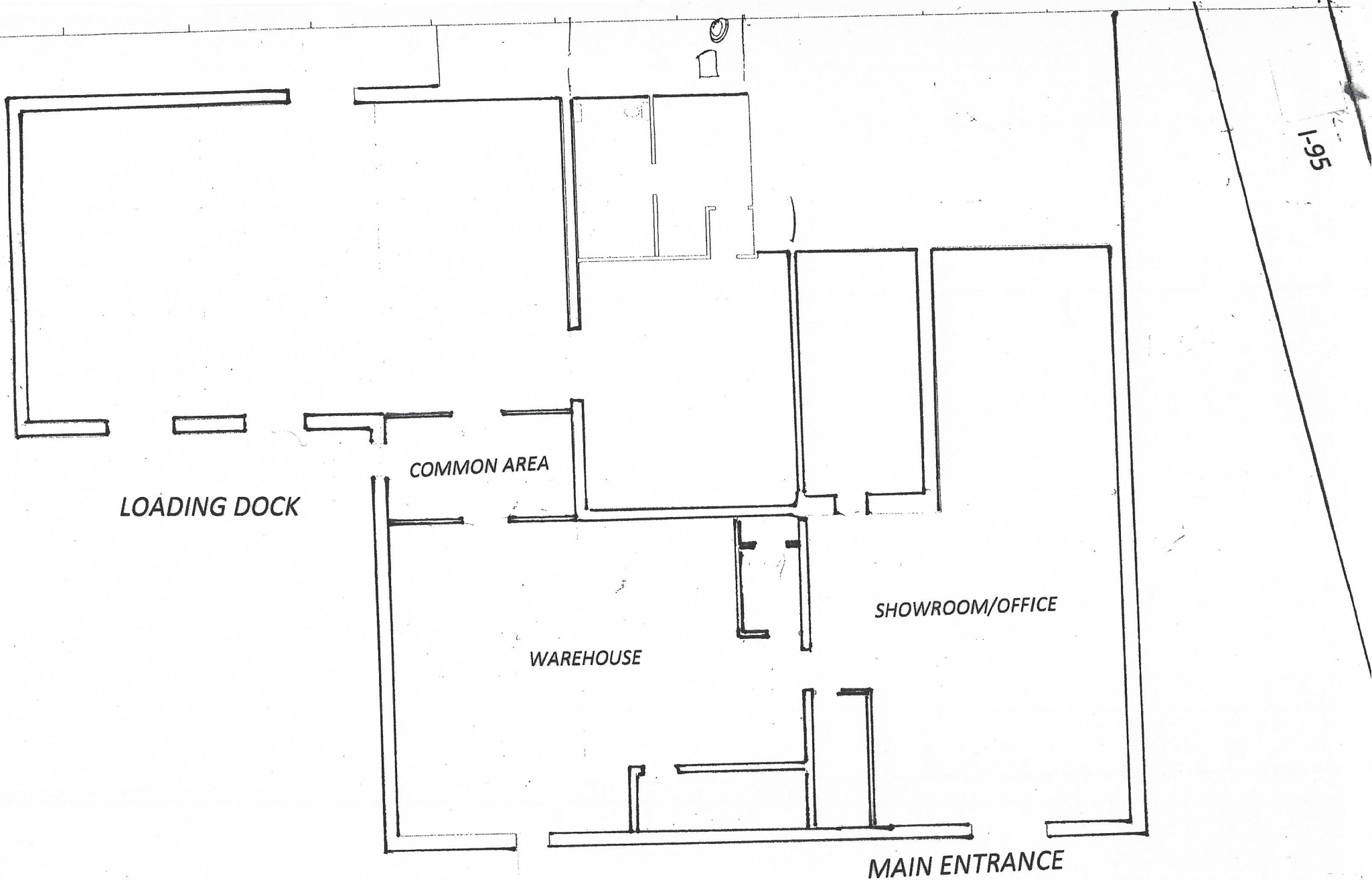
Individual Members

Society of Industrial and Office Realtors

**VIDAL/WETTENSTEIN, LLC**

719 Post Road East, Westport, CT 06880

[www.vidalwettenstein.com](http://www.vidalwettenstein.com)



1-95

LOADING DOCK

COMMON AREA

WAREHOUSE

SHOWROOM/OFFICE

MAIN ENTRANCE

300 Honeyspot Road  
Stratford, CT

PRELIMINARY SET. NOT FOR CONSTRUCTION

NOT TO SCALE

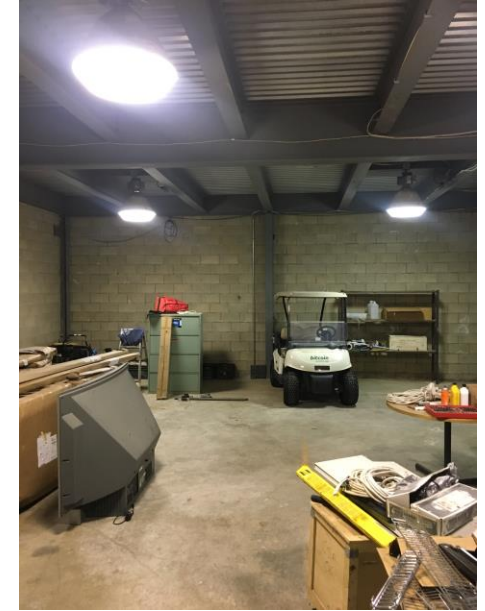
PARKING

2,875 sq/ft

# 300 Honeyspot Road Stratford, Connecticut



2,875 SQUARE FEET, EXPANDABLE  
Up to 5,500 SQUARE FEET



Contact Bruce Wettstein, SIOR

203-226-7101 ext. 2 ~ [bruce@vidalwettenstein.com](mailto:bruce@vidalwettenstein.com)

All information from sources deemed reliable and is submitted subject to errors, omissions, change of price, rental, and property sale and withdrawal notice.



**SIOR**

Individual Members

Society of Industrial and Office Realtors

**VIDAL/WETTENSTEIN, LLC**

719 Post Road East, Westport, CT 06880

[www.vidalwettenstein.com](http://www.vidalwettenstein.com)