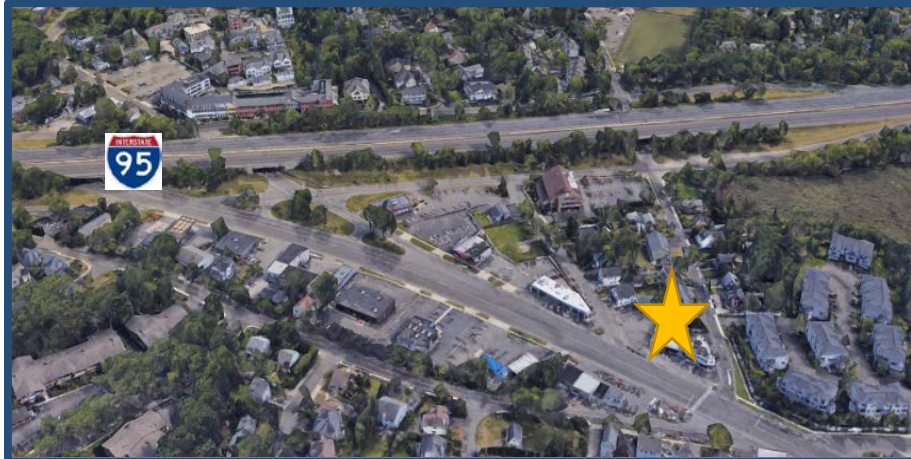


Extraordinary Retail Location for Lease



- Excellent visibility on Post Road
- Abundant on-site parking
- Close proximity to exit 19 (North & South) of I-95.

Dot Traffic: 24,000

Area Demographics	1 Mile	3 Miles	5 Miles
Population	5,235	37,390	97,300
Avg. HH Income	\$154,203	\$153,097	\$116,302

All information from sources deemed reliable and is submitted subject to errors, omissions, change of price, rental, and property sale and withdrawal notice.

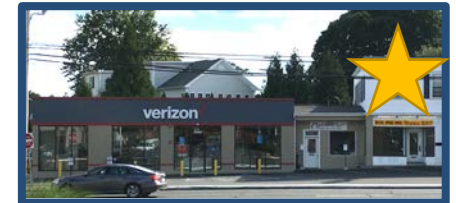
3449 Post Road Southport, Connecticut

Premises: 600± square feet, ideal for retail or office.

Zone: DCD – allowing for wide array of uses.

Neighbors include:

- Delamar Hotel
- Grey Goose Restaurant
- Equinox Gym
- Baskin Robbins
- Dunkin Donuts
- Garellick & Herbs
- Home Goods
- Panera Bread
- Organika
- Verizon



For additional information please contact Robert Lewis
(203) 226-7101 ext. 7
robert@vidalwettenstein.com



SIOR

Individual Members

Society of Industrial and Office Realtors

VIDAL/WETTENSTEIN, LLC

719 Post Road East, Westport, CT 06880

www.vidalwettenstein.com