

VIDAL/WETTENSTEIN, LLC

Real Estate for Business & Investment

OFFICE SPACE FOR LEASE



19 Ludlow Road, Westport, Connecticut

2,771 rentable square feet

Location: Convenient to downtown & train

Parking: Ample garage and surface parking

Space offers: 6 offices, open bullpen, conference room, kitchenette, 2 private bathrooms.

Rent: Only \$24 per rsf plus utilities

Comments:

Efficient layout in attractive professional building with ample garage and surface parking. Convenient to downtown and train station. Asking only \$24.00 psf.

**For additional information please contact David Fugitt, SIOR
(203) 226-7101 (ext. 5) or email david@vidalwettenstein.com**

All information from sources deemed reliable and is submitted subject to errors, omissions, change of price, rental, and property sale and withdrawal notice.



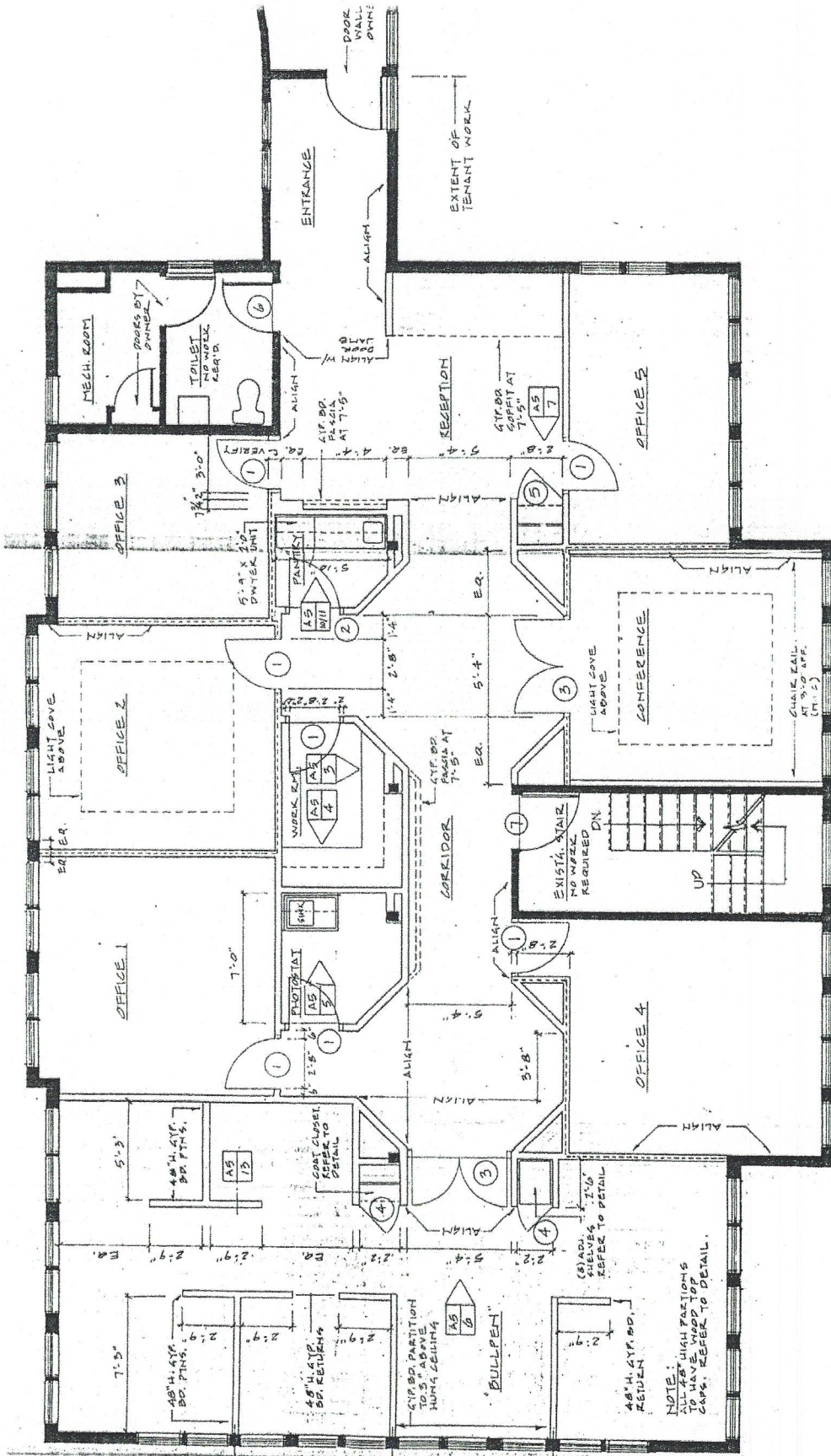
Individual Members
Society of Industrial and Office Realtors

719 Post Road East, Westport, CT 06880

Phone: (203) 226-7101

www.vidalwettenstein.com

Suite 202 19 Ludlow Rd



2771 sq ft

NOTE:
ALL HIGH PARTITIONS
TO HAVE WOOD TOP
CAPS. REFER TO DETAIL.