

# 19 LUDLOW ROAD, WESTPORT, Connecticut



OFFICE SPACES FOR LEASE  
1,432 – 2,681 rentable square feet

**Location:** Convenient to downtown & train

**Parking:** Ample garage and surface parking

**Space offers:** A combination of private offices and open space

**Rent:** \$21.00 per rsf plus utilities

- Attractive building
- Upgraded common areas
- Conveniently located
- Professional setting
- You will be proud of yourself for finding such value

Contact David Fugitt, SIOR  
203.226.7101 ext. 5  
Email: [david@vidalwettenstein.com](mailto:david@vidalwettenstein.com)

All information from sources deemed reliable and is submitted subject to errors, omissions, change of price, rental, and property sale and withdrawal notice.



**SIOR**

Individual Members

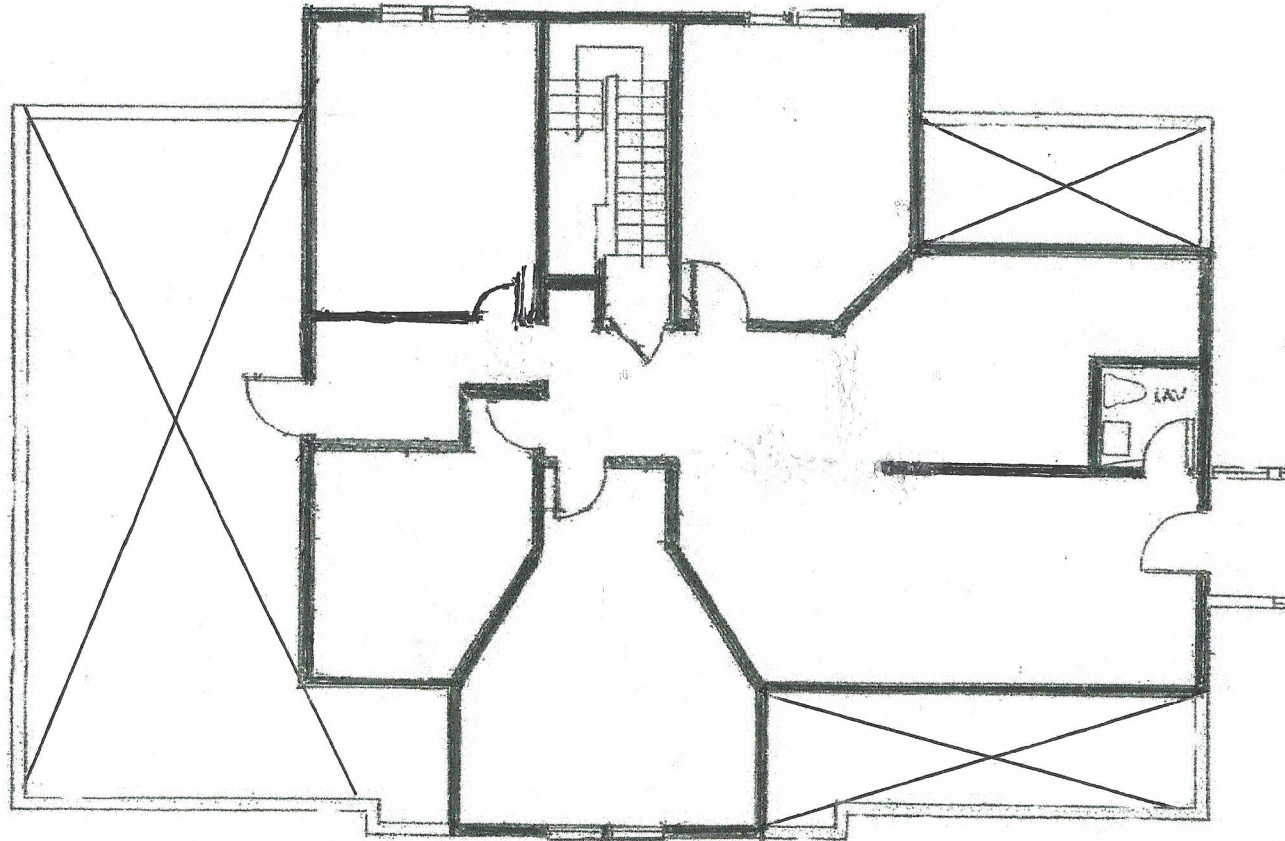
Society of Industrial and Office Realtors

**VIDAL/WETTENSTEIN, LLC**

719 Post Road East, Westport, CT 06880

[www.vidalwettenstein.com](http://www.vidalwettenstein.com)

# 19 Ludlow Road, Westport, 1432 Sq. Ft.



All information from sources deemed reliable and is submitted subject to errors, omissions, change of price, rental, and property sale and withdrawal notice.

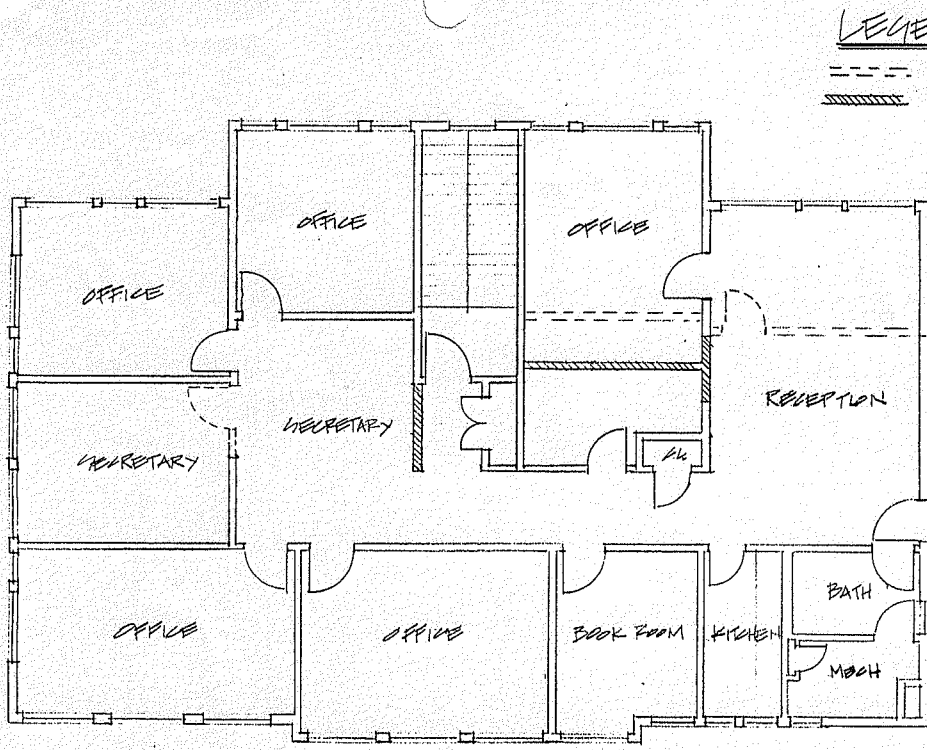


Individual Members  
Society of Industrial and Office Realtors

**VIDAL/WETTENSTEIN, LLC**

719 Post Road East, Westport, CT 06880

[www.vidalwettenstein.com](http://www.vidalwettenstein.com)



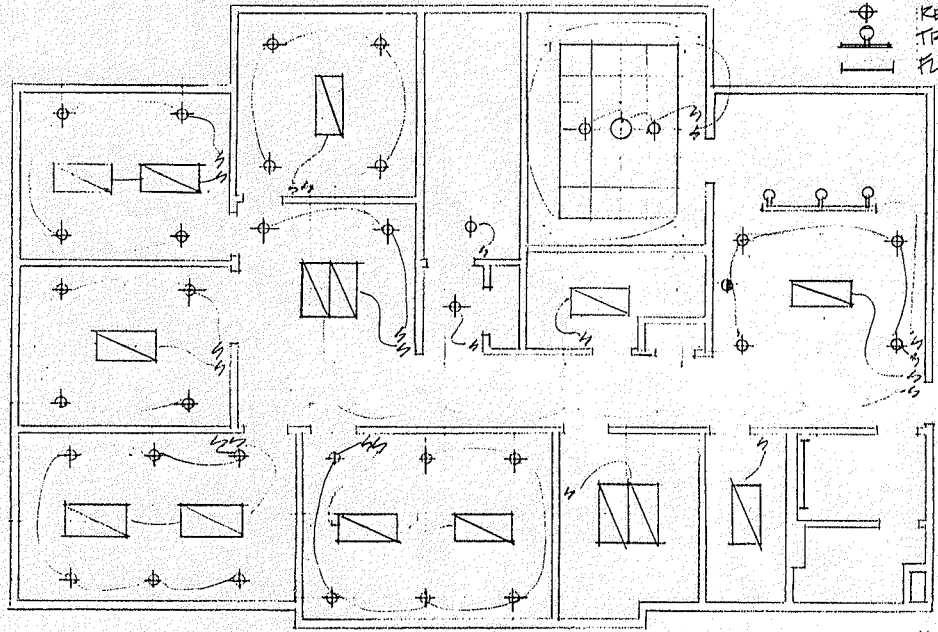
LEGEND  
 --- DEMO STUD WALL  
 // NEW STUD WALL

ROME ADAMS CONSTRUCTION  
 1 KING 44 HWY. N. WESTPORT CT.  
 06880 • 203 • 226 • 8211

(A) PLAN - GROUND FLOOR  
 1/8" = 1'-0"

Suite 201 19 Ludlow

ELECTRIC LEGEND  
 [Symbol] RECEIVED FLUO. EXHIBIT  
 [Symbol] PENDANT  
 [Symbol] RECEIVED INCANDESCENT  
 [Symbol] TRACK LIGHT  
 [Symbol] FLUORESCENT STRIP EXHIBIT



(B) LIGHTING PLAN  
 1/8" = 1'-0"

PROJECT  
 OFFICE RENOVATION  
 19 LUDLOW ROAD  
 WESTPORT CT.

CLIENT  
 ROBER & ROWS  
 3 GYLVAN ROAD S.  
 WESTPORT CT.

Date Jan 20, 1995

OK KM

A-1



# 19 Ludlow Road, Westport, Connecticut



All information from sources deemed reliable and is submitted subject to errors omissions, change of price, rental, and property sale and withdrawal notice.



Individual Members  
Society of Industrial and Office Realtors

## VIDAL/WETTENSTEIN, LLC

719 Post Road East, Westport, CT 06880  
[www.vidalwettenstein.com](http://www.vidalwettenstein.com)