

# 19 LUDLOW ROAD, WESTPORT, Connecticut



OFFICE SPACES FOR LEASE  
1,432 – 2,681 rentable square feet

Location: Convenient to downtown & train

Parking: Ample garage and surface parking

Space offers: A combination of private offices and open space

**Rent: From \$21.00 per rsf plus utilities**

- Attractive building
- Upgraded common areas
- Conveniently located
- Professional setting
- You will be proud of yourself for finding such value

Contact David Fugitt, SIOR  
203.226.7101 ext. 5  
Email: [david@vidalwettenstein.com](mailto:david@vidalwettenstein.com)

All information from sources deemed reliable and is submitted subject to errors, omissions, change of price, rental, and property sale and withdrawal notice.



**SIOR**

Individual Members

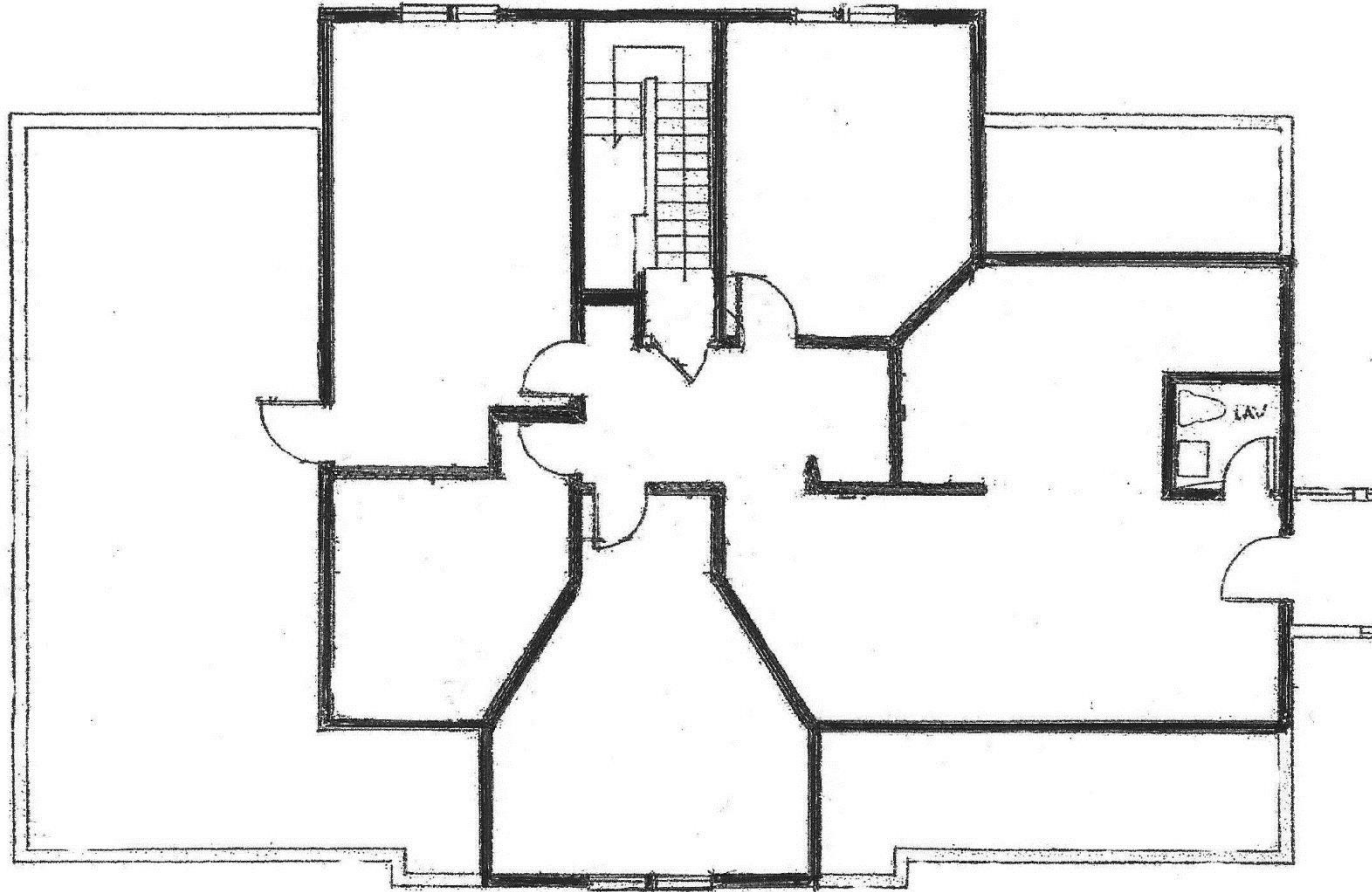
Society of Industrial and Office Realtors

**VIDAL/WETTENSTEIN, LLC**

719 Post Road East, Westport, CT 06880

[www.vidalwettenstein.com](http://www.vidalwettenstein.com)

# 19 Ludlow Road, Westport, 1432 Sq. Ft.



All information from sources deemed reliable and is submitted subject to errors, omissions, change of price, rental, and property sale and withdrawal notice.



**SIOR**

Individual Members

Society of Industrial and Office Realtors

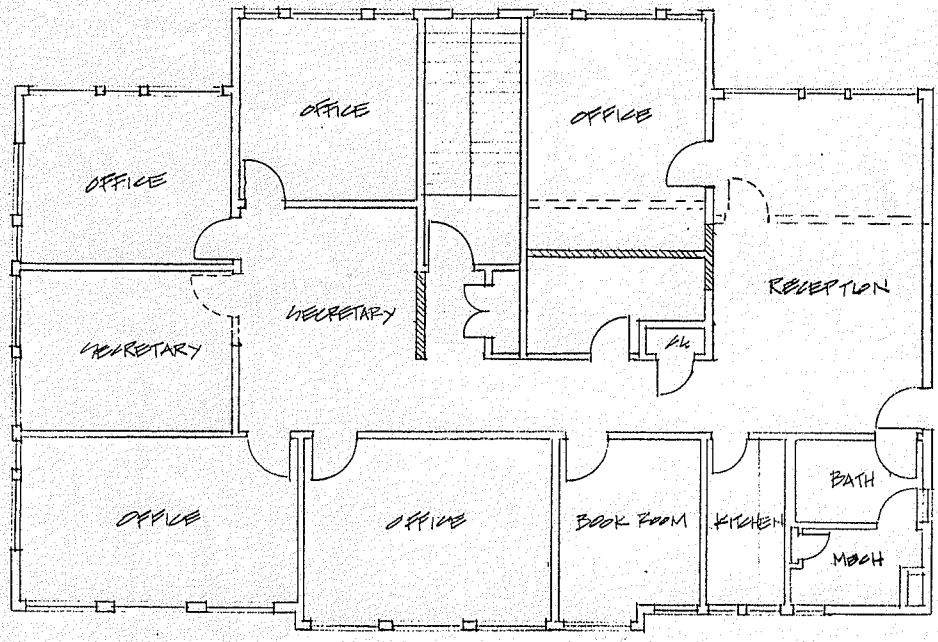
**VIDAL/WETTENSTEIN, LLC**

719 Post Road East, Westport, CT 06880

[www.vidalwettenstein.com](http://www.vidalwettenstein.com)

LEGEND

- - - - - DEMO STUD WALL
- ===== NEW STUD WALL

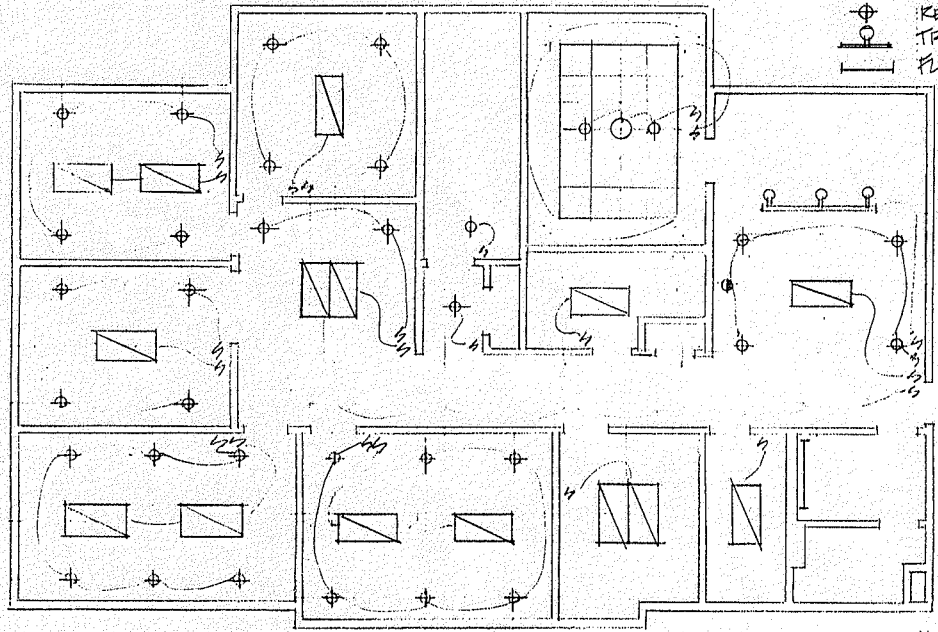


(A) PLAN - GROUND FLOOR  
1/8" = 1'-0"

Suite 201 19 Ludlow

ELECTRIC LEGEND

- ▭ RECESSED FLUO. EXHMTG
- PENDANT
- ⊕ RECESSED INCANDESCENT
- TRACK LIGHT
- ▭ FLUORESCENT STRIP EXHMTG



(B) LIGHTING PLAN  
1/8" = 1'-0"

Date Jan 20, 1995

OK KM

ROSE ADAMS CONSTRUCTION  
1 KINGG HWY. N. WESTPORT CT.  
06880 • 203 • 226 • 8211

PROJECT  
OFFICE RENOVATION  
19 LUDLOW ROAD  
WESTPORT CT.

CLIENT  
ROBER & ROWS  
3 GYLVAN ROAD S.  
WESTPORT CT.

A-1