

UNIQUE SMALL OFFICE LEASE OPPORTUNITY

1723 Post Road East, Westport CT



- Shared office space, full floor available, in owner occupied building
- Free standing boutique office building, well suited for financial manager/ private equity/ investment firm
- High quality custom finishes throughout including kitchen and gym space
- Divisible 1,600± square feet
- Intimate park-like setting with ample private parking



For further information, please contact: Robert Lewis
203.226.7101 ext. 7 robert@vidalwettenstein.com

All information from sources deemed reliable and is submitted subject to errors, omissions, change of price, rental, and property sale and withdrawal notice.



Individual Members
Society of Industrial and Office Realtors

VIDAL/WETTENSTEIN, LLC

719 Post Road East, Westport, CT 06880
www.vidalwettenstein.com

UNIQUE SMALL OFFICE LEASE OPPORTUNITY

1723 Post Road East, Westport CT

- Superb Post Road location close to all amenities
- Metro North Stations:
 - Greens Farms - 1.8 mile
 - Southport - 1 mile
- Easy Access to Both Exits 18 & 19 of I-95



All information from sources deemed reliable and is submitted subject to errors, omissions, change of price, rental, and property sale and withdrawal notice.



SIOR

Individual Members
Society of Industrial and Office Realtors

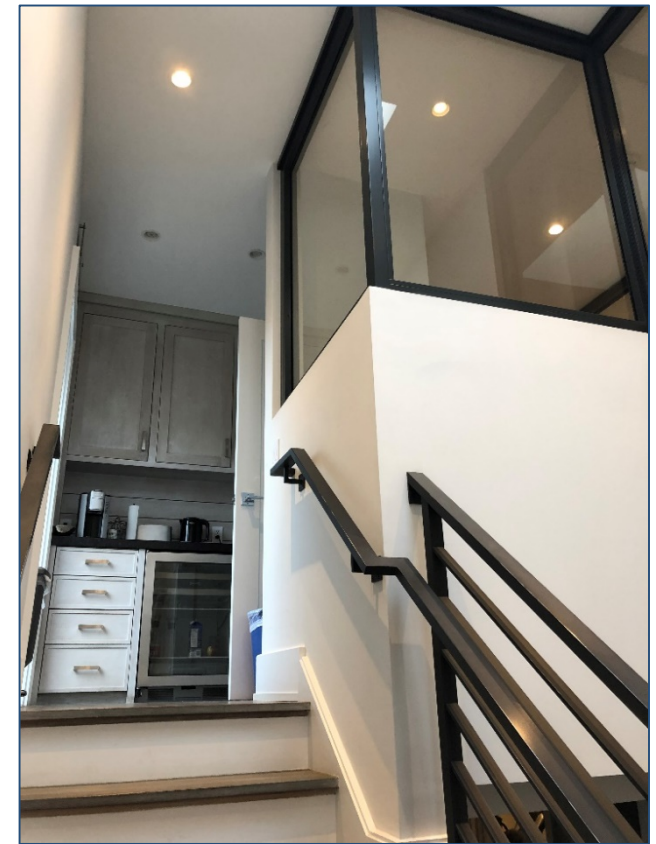
VIDAL/WETTENSTEIN, LLC

719 Post Road East, Westport, CT 06880

www.vidalwettenstein.com

UNIQUE SMALL OFFICE LEASE OPPORTUNITY

1723 Post Road East, Westport CT



All information from sources deemed reliable and is submitted subject to errors, omissions, change of price, rental, and property sale and withdrawal notice.

VIDAL/WETTENSTEIN, LLC



SIOR

Individual Members
Society of Industrial and Office Realtors

719 Post Road East, Westport, CT 06880

www.vidalwettenstein.com

UNIQUE SMALL OFFICE LEASE OPPORTUNITY

1723 Post Road East, Westport CT



All information from sources deemed reliable and is submitted subject to errors, omissions, change of price, rental, and property sale and withdrawal notice.

VIDAL/WETTENSTEIN, LLC

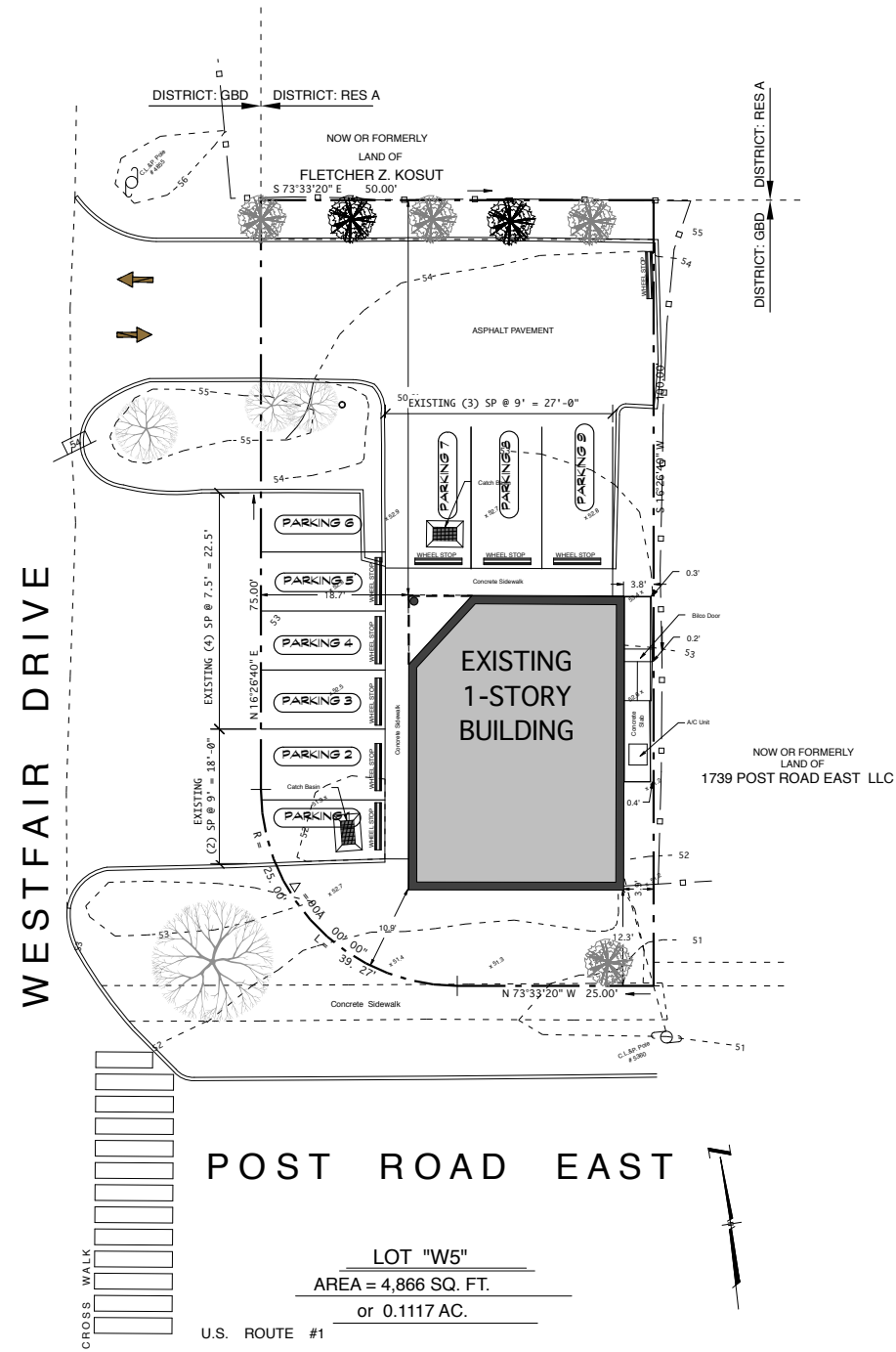


SIOR

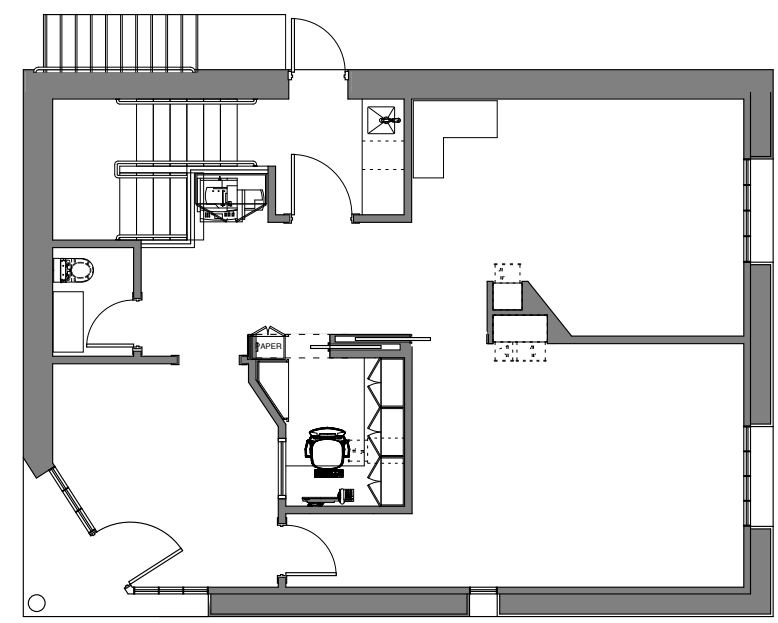
Individual Members
Society of Industrial and Office Realtors

719 Post Road East, Westport, CT 06880

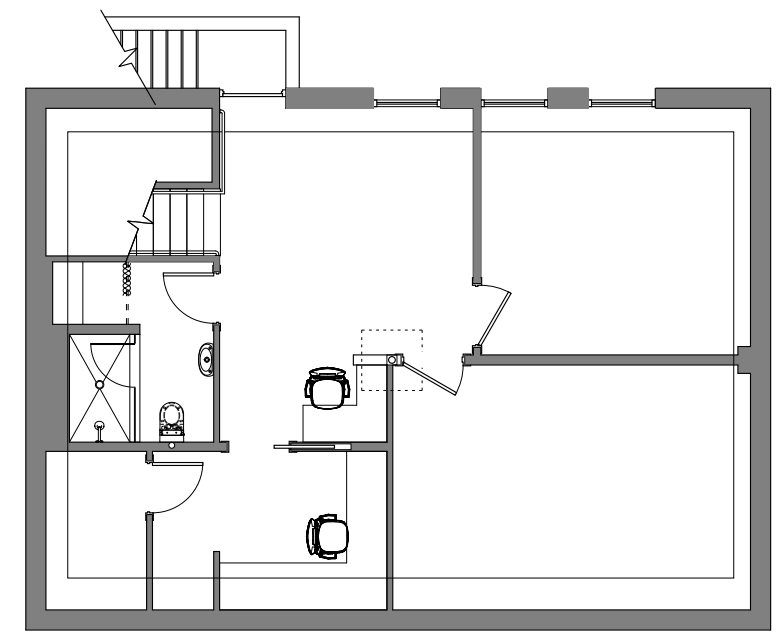
www.vidalwettenstein.com



1 SITE PLAN
SCALE: N.T.S.



2 FIRST FLOOR PLAN
SCALE: 1/4" = 1'-0"



3 CELLAR INTERIOR PLAN
SCALE: 1/4" = 1'-0"



COASTAL CONSTRUCTION GROUP

THESE DOCUMENTS ARE THE SOLE PROPERTY OF COASTAL CONSTRUCTION GROUP, LLC AND MAY NOT BE COPIED OR DISTRIBUTED WITHOUT EXPRESS CONSENT BY COMPANY REPRESENTATIVES.

<p>COASTAL CONSTRUCTION GROUP INTERIOR RENOVATIONS</p>	<p>1723 POST ROAD EAST WESTPORT, CT 06880</p>
---	---

REVISONS:	DATE:	DESCRIPTION:
	05/11/13	ISSUED FOR PERMIT

JOB: 1723PRE	DRAWN BY: KLP
SCALE: 1/4" = 1'-0"	DATE: 05/11/13

PROPOSED FLOOR PLANS

CCG.SK.A1