

# 162 Kings Highway North, Westport Connecticut



## 3,001 Square Feet

Spectacular Space with upscale gym & office.

Will truly impress your patients/clients.

Join many established medical practices

Excellent parking

Fabulous river views

Very accessible

Well known downtown location

Contact David Fugitt, SIOR

203.226.7101 Ext 5

[david@vidalwettenstein.com](mailto:david@vidalwettenstein.com)

***NEW TO MARKET***

Premier Medical Space for Lease

All information from sources deemed reliable and is submitted subject to errors, omissions, change of price, rental, and property sale and withdrawal notice.



**SIOR**

Individual Members

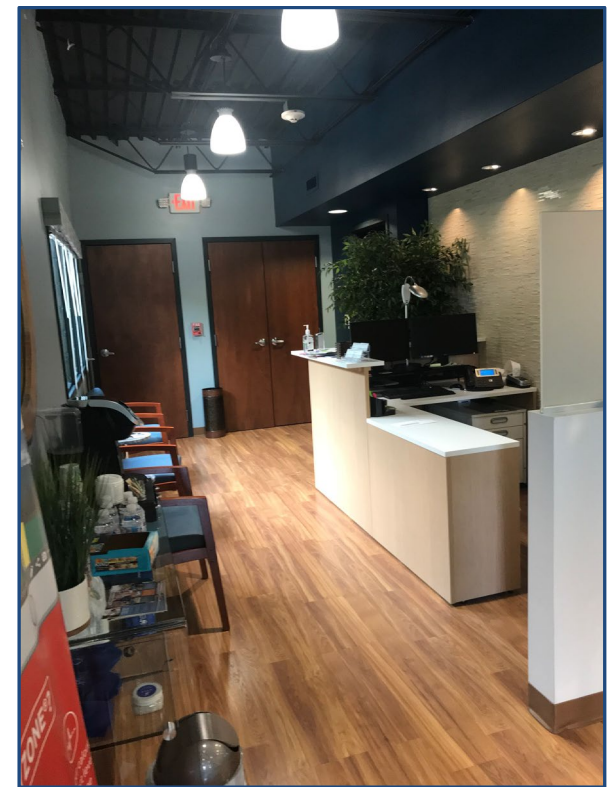
Society of Industrial and Office Realtors

**VIDAL/WETTENSTEIN, LLC**

719 Post Road East, Westport, CT 06880

[www.vidalwettenstein.com](http://www.vidalwettenstein.com)

# 162 Kings Highway North, Westport Connecticut



All information from sources deemed reliable and is submitted subject to errors, omissions, change of price, rental, and property sale and withdrawal notice.

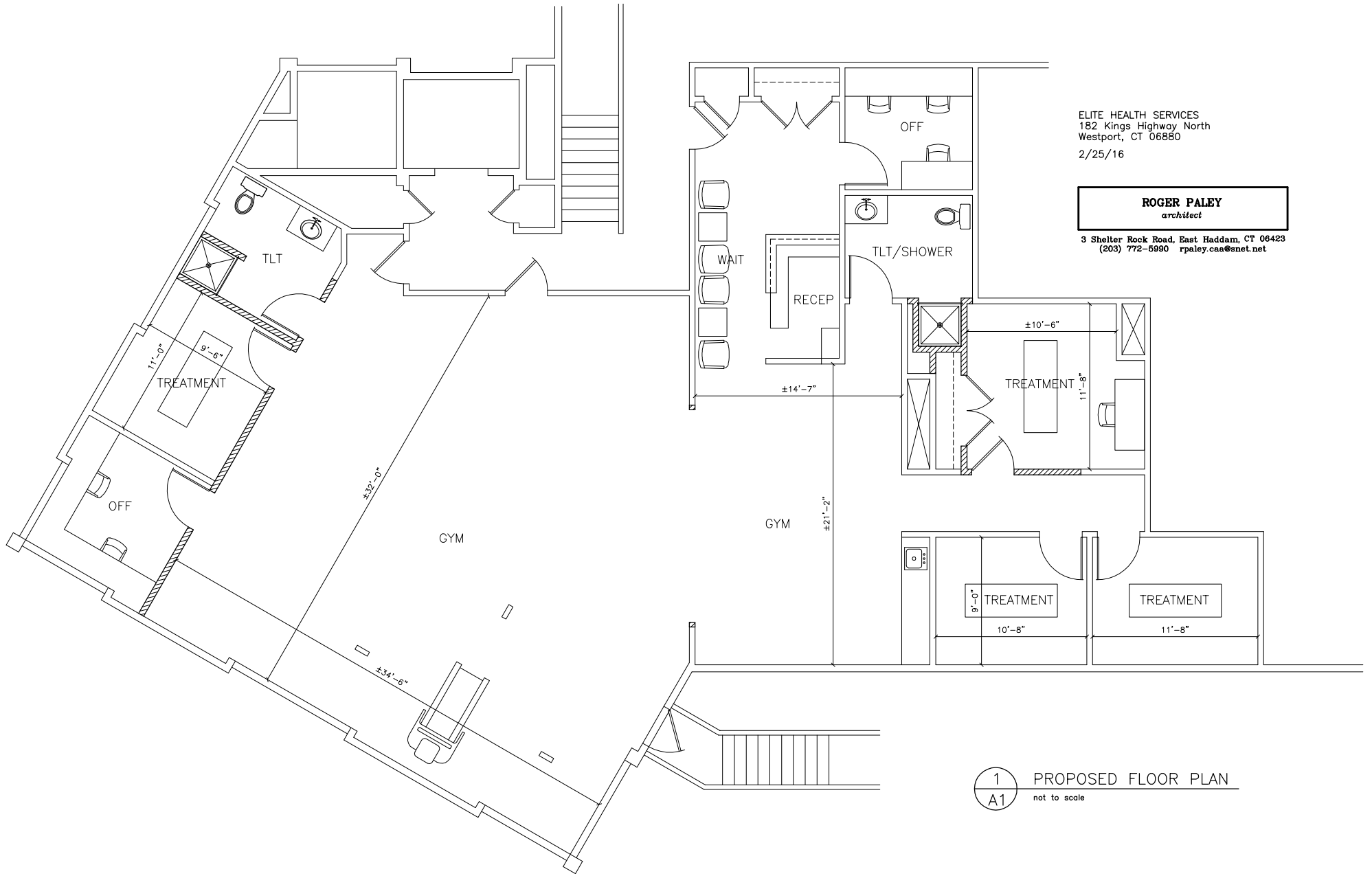


Individual Members  
Society of Industrial and Office Realtors

## VIDAL/WETTENSTEIN, LLC

719 Post Road East, Westport, CT 06880

[www.vidalwettenstein.com](http://www.vidalwettenstein.com)



ELITE HEALTH SERVICES  
 182 Kings Highway North  
 Westport, CT 06880  
 2/25/16

**ROGER PALEY**  
*architect*  
 3 Shelter Rock Road, East Haddam, CT 06423  
 (203) 772-5990 rpailey.caa@snet.net

1 PROPOSED FLOOR PLAN  
 A1 not to scale