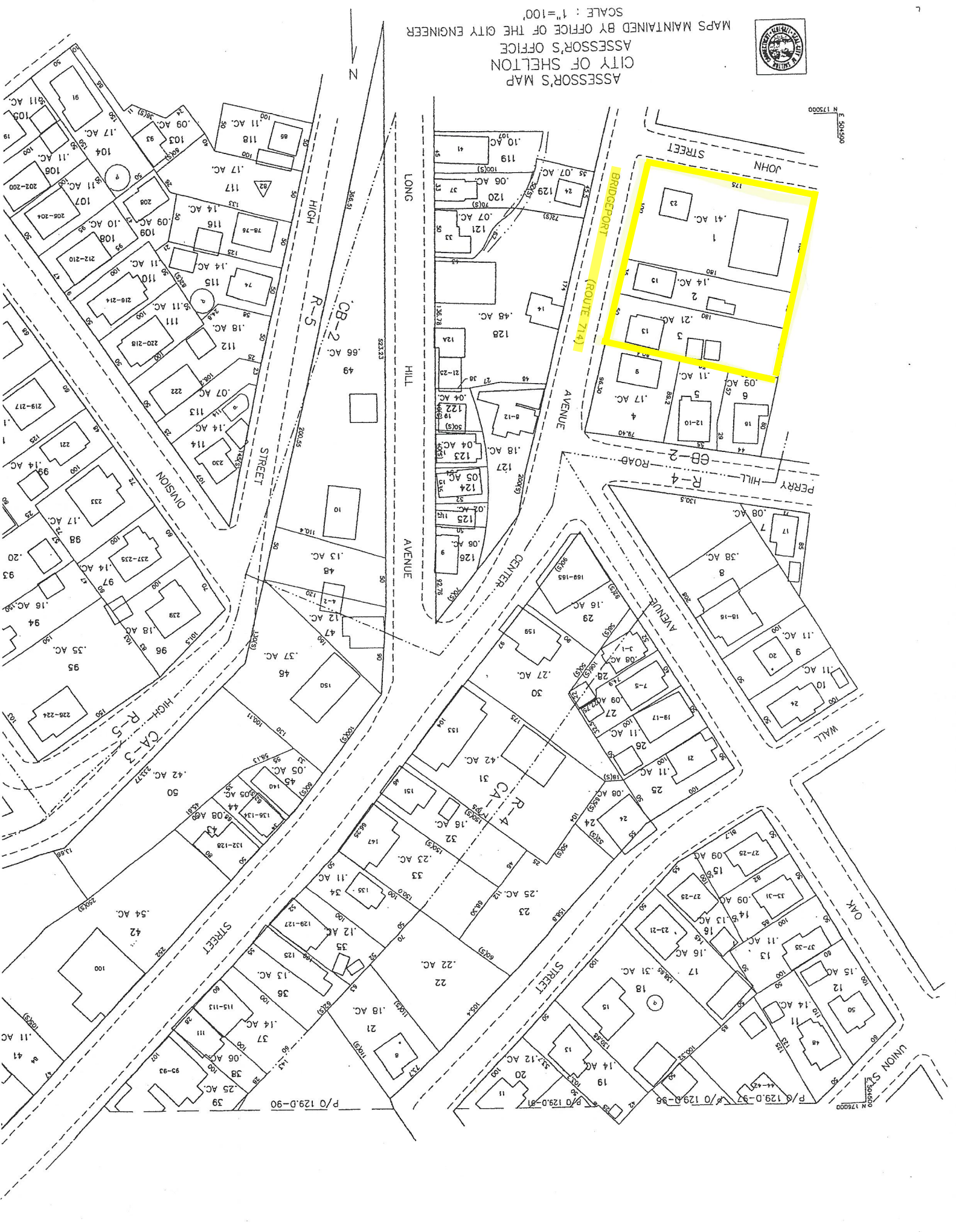




ASSASSOR'S MAP  
 CITY OF SHELTON  
 ASSASSOR'S OFFICE  
 MAPS MAINTAINED BY OFFICE OF THE CITY ENGINEER  
 SCALE : 1"=100'



N 175000  
 E 509450

N 175000  
 E 509450

P/O 129.0-90

P/O 129.0-81

P/O 129.0-96