

FAIRFIELD CENTER OFFICE LOCATION

1248 Post Road, Fairfield, Connecticut



This distinctive Williamsburg Colonial brick building in downtown Fairfield offers three floors with an elevator. The beautiful interior provides individual controlled HVAC, and no need to drive as it is convenient to walk to the train, banks, post office, restaurants and more.

2,442± SF Available for Lease

- 9,880± total building square feet
- Second floor office space
- Generous parking
- **\$32.00 PSF + Utilities**
- ¼ mile to I-95, located on a bus line and only 50 miles to NYC

For further information please contact
Randy Vidal 203-226-7101 Ext 3
randy@vidalwettenstein.com

All information from sources deemed reliable and is submitted subject to errors, omissions, change of price, rental, and property sale and withdrawal notice.



SIO

Individual Members

Society of Industrial and Office Realtors

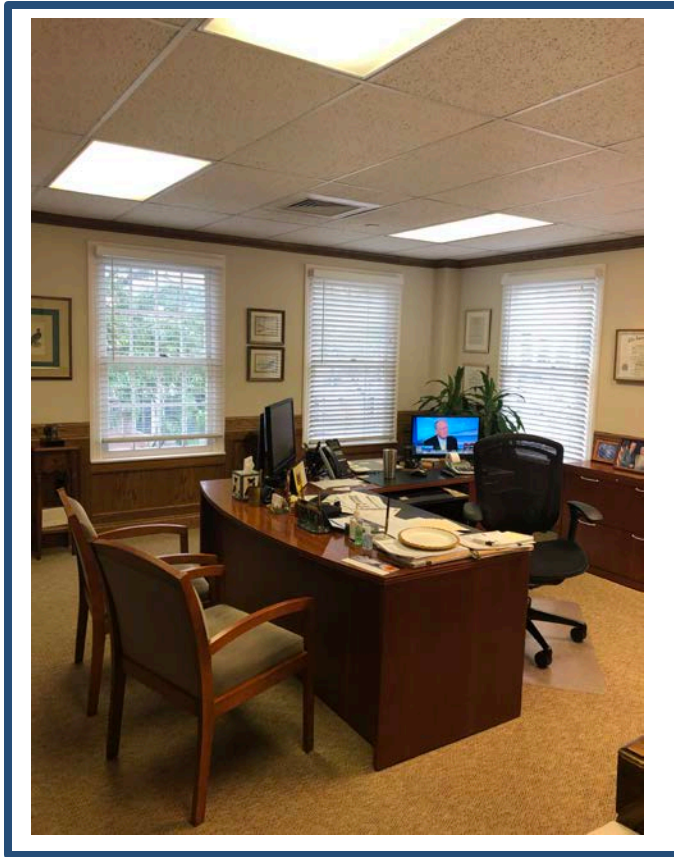
VIDAL/WETTENSTEIN, LLC

719 Post Road East, Westport, CT 06880

www.vidalwettenstein.com

1248 Post Road, Fairfield Connecticut

FAIRFIELD CENTER OFFICE LOCATION



All information from sources deemed reliable and is submitted subject to errors, omissions, change of price, rental, and property sale and withdrawal notice.



SIOR

Individual Members

Society of Industrial and Office Realtors

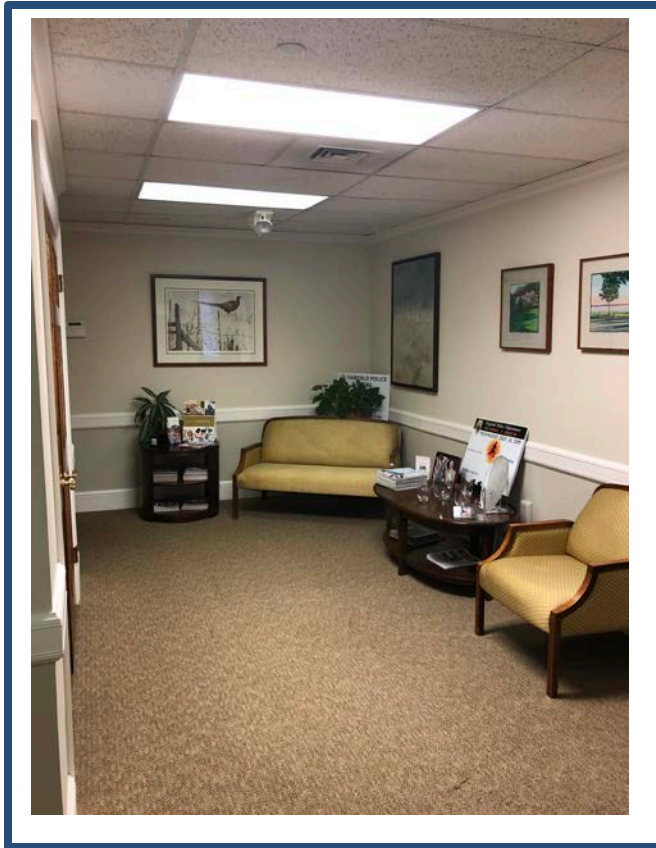
VIDAL/WETTENSTEIN, LLC

719 Post Road East, Westport, CT 06880

www.vidalwettenstein.com

1248 Post Road, Fairfield Connecticut

FAIRFIELD CENTER OFFICE LOCATION



All information from sources deemed reliable and is submitted subject to errors, omissions, change of price, rental, and property sale and withdrawal notice.



SIOR

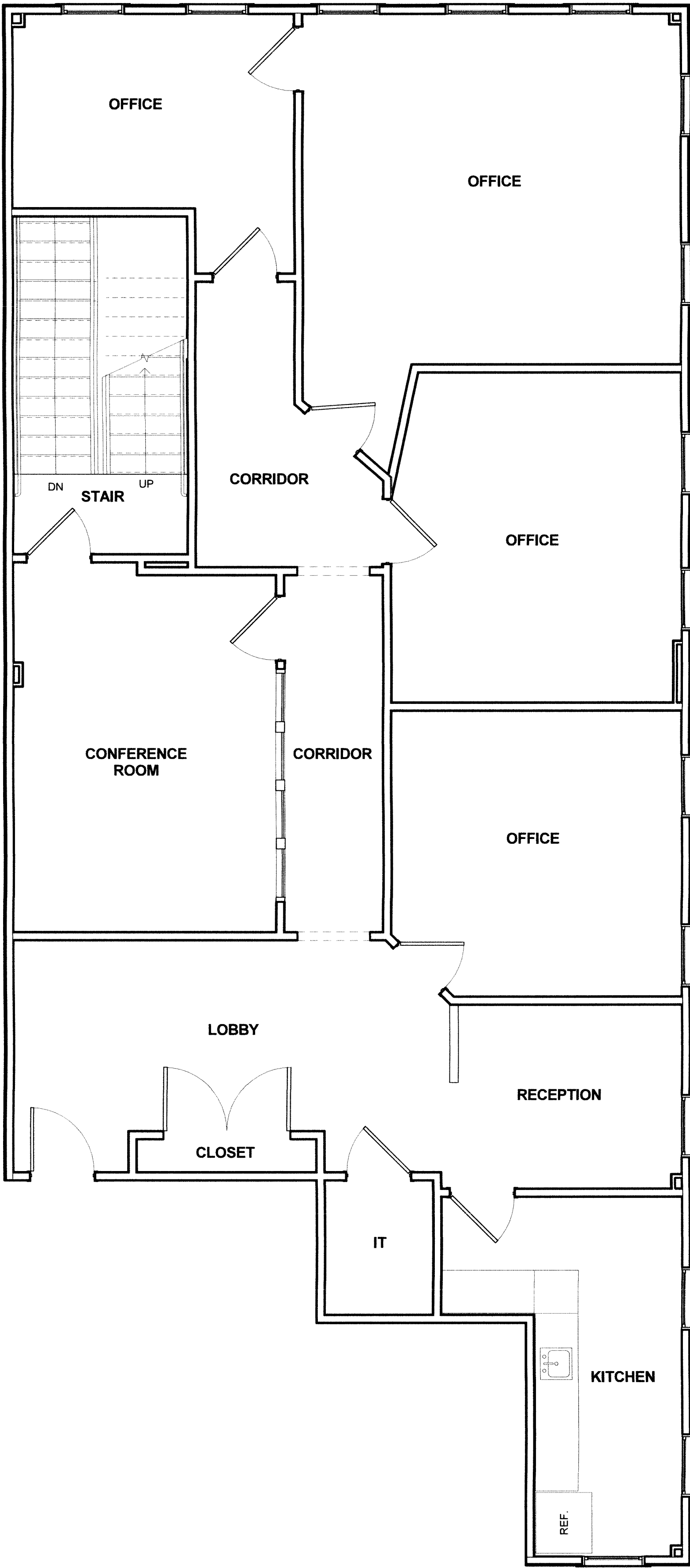
Individual Members

Society of Industrial and Office Realtors

VIDAL/WETTENSTEIN, LLC

719 Post Road East, Westport, CT 06880

www.vidalwettenstein.com



1 Existing Second Floor Plan
1/4" = 1'-0"

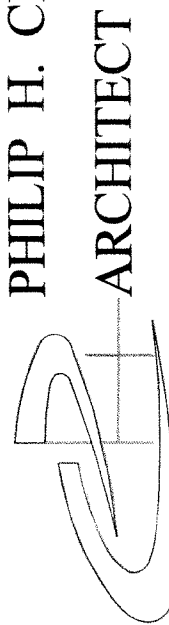


Rocco & Associates
1248 Post Road
Fairfield, CT

SHEET TITLE
Existing Conditions

Ex-101

PHILIP H. CERRONE III, AIA, NCARB



ARCHITECT
421 Meadow Street
Fairfield, Connecticut 06424
203-335-2066

SCALE
1/4" = 1'-0"

DATE
04/12/17

DRAWN BY
1712_em

REVISION

THIS DRAWING IS THE PROPERTY OF THE ARCHITECT. IT HAS BEEN PREPARED SPECIFICALLY FOR THE OWNER FOR THIS PROJECT AT THIS SITE, AND IS NOT TO BE USED FOR ANY OTHER PURPOSE, LOCATION, OR DATE, WITHOUT WRITTEN CONSENT OF THE ARCHITECT.