



LAND AVAILABLE FOR SALE

0 Williams Street, Milford, CT

Exit 35

To arrange a tour contact:
Bruce Wettenstein, SIOR 203-226-7101 Ext 2
bruce@vidalwettenstein.com



SIOR Individual Members
Society of Industrial & Office Realtors

VIDAL/WETTENSTEIN, LLC



719 Post Road East, Westport, CT 06880
www.vidalwettenstein.com

All information from sources deemed reliable and is submitted subject to errors, omissions, change of price, rental, and property sale and withdrawal notice.

0 Williams Street, Milford, CT

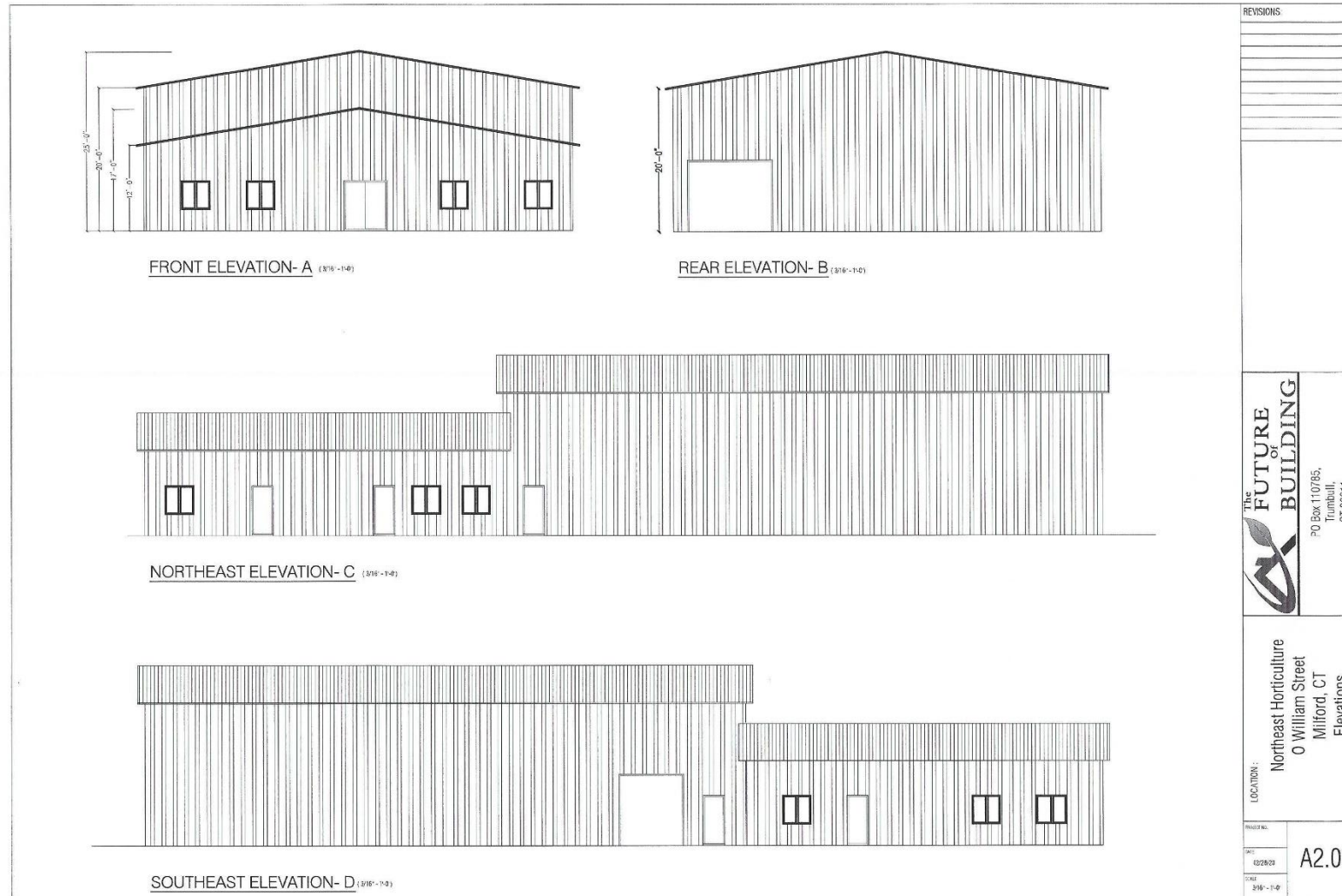
Approved Parcel for an Industrial Building

- 1.84 acres
- Zoned LI
- Access via Rowe Avenue
- 50% coverage allowed
- Sale Price \$710,000.

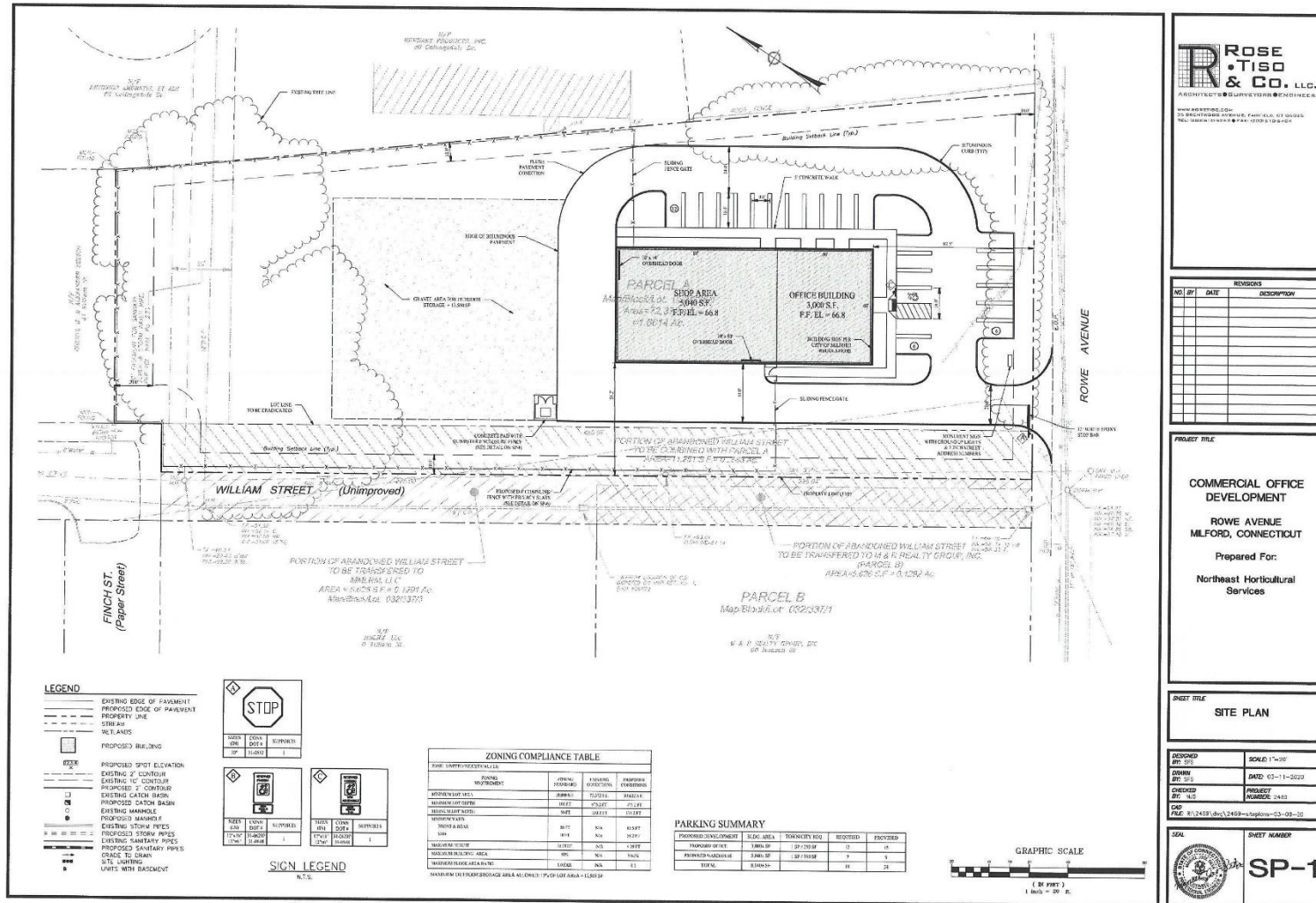


Location: Convenient to exit 34 & 35 of I-95.

0 Williams Street, Milford, CT



0 Williams Street, Milford, CT



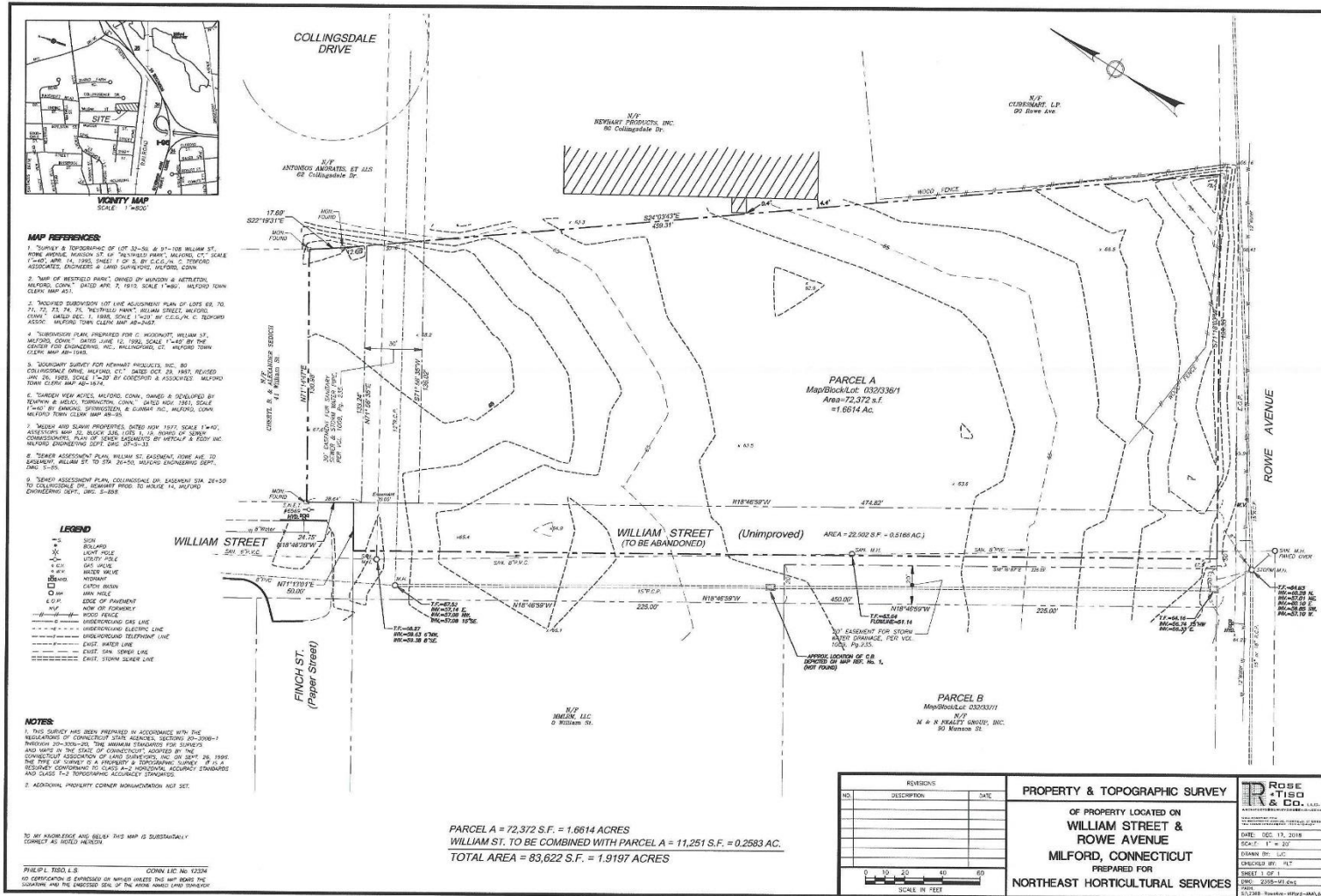
SIOR Individual Members
Society of Industrial & Office Realtors

VIDAL/WETTENSTEIN, LLC



719 Post Road East, Westport, CT 06880
www.vidalwettenstein.com

0 Williams Street, Milford, CT



Individual Members
Society of Industrial & Office Realtors

VIDAL/WETTENSTEIN, LLC



719 Post Road East, Westport, CT 06880
www.vidalwettenstein.com

All information from sources deemed reliable and is submitted subject to errors, omissions, change of price, rental, and property sale and withdrawal notice.